



TrueChrome with Smart HD Screen



No PC, no drivers, no operating system issues,
with only a mouse to start your work!

TrueChrome

HDMI Camera with Built-in Mouse Control Function

The TrueChrome series of cameras have a built-in mouse control function, obviating the need for a host computer, the camera can be directly connected to the display, making it easy to carry out a variety of functional and image storage operations.

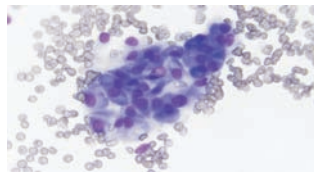
TrueChrome series

- Truechrome Metrics
- Truechrome IIS
- HD Lite



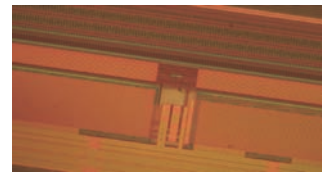
Sample >> Applications

Pathological analysis



Pathological analysis requires the image color fidelity should be 100% accurate. Especially for the digital imaging, it has great claims for the purple blue color rendition. With perfect performance for purple blue colors, TrueChrome Metrics ensures precise and accurate pathological images.

Material qualification



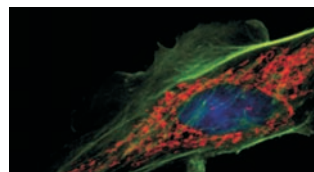
Industry applications highly require excellent clear and sharp images without any delay. Up to 60fps high definition live preview from TrueChrome Metrics allows you to comfortably and efficiently do the quality inspection.

Teaching



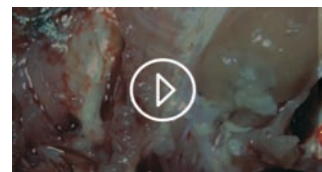
In teaching presentations, the lecturer uses a computer to set up a specimen and projects the specimen images to a big screen for student to watch. TrueChrome Metrics allows a dual live video stream to a PC and any imaging device with HDMI interface.

Fluorescence imaging



When come to low light applications, it crucial to have high sensitivity cameras. Up to 10 seconds exposure capability means TrueChrome Metrics 300 times more sensitive than the other HDMI cameras in the market.

Medical anatomy recording



Need to record the microsurgery procedures clearly and fluently? TrueChrome Metrics's high definition high speed recording capability offers superb documentation at 1080P 30fps.

Retina Screen

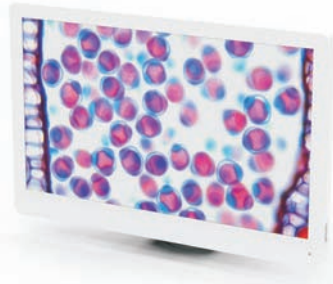
1080P Screen for TrueChrome Series Camera

In order to allow users to feel the perfect scientific experience, Tucsen provides the user with the perfect matching of the Retina Screen and HDMI Camera.



11.6 inch portable screen

Easy to carry. Save the desktop space, with the new map of the camera at any time to carry out scientific photography.



1080P HD preview resolution

1080p, known as Full HD, is a set of HD TV high-definition video modes, characterized by 1080 horizontal lines of vertical resolution and progressive scan.



Support for TrueChrome cameras

A camera with Truechrome connection and the standard of the HDMI standard full HD interface, to reproduce the real image, transmission frames per second can be reached 30fps. Transmission speed of leading the world.

HDMI Camera Features

Model	TrueChrome Metrics	TrueChrome IIS	HD Lite
Advantage	<ul style="list-style-type: none"> Multi-language operation interface Perfect color reproduction Calibration and Measurement High speed data transmission Fluorescence imaging 	<ul style="list-style-type: none"> Perfect color reproduction High speed data transmission Fluorescence imaging 	• 5MP
Sensor	CMOS	CMOS	CMOS
Sensor size	1/2.8"	1/2.8"	1/2.5"
Image Processor	Built-in ISP	Built-in ISP	Built-in ISP
Dynamic resolution	1920x1080	1920x1080	1920x1080
Static resolution	3264x1836	3264x1836	2592x1932
Frame rate	30fps@USB2.0 30fps@HDMI	30fps@USB2.0 30fps@HDMI	15fps@USB2.0 15fps@HDMI
Capture	SD card(16G)	SD card(16G)	SD card(8G)
Video recording	30fps @SD 30fps @PC	30fps @SD 30fps @PC	15fps @SD 15fps @PC
Exposure Mode	Auto/Manual	Auto/Manual	Auto/Manual
Exposure time	0.001sec-10.0sec	0.001sec-10.0sec	0.001sec-10.0sec
White balance	Auto/Manual	Auto/Manual	Auto/Manual
Setting	Gain,gamma, saturation,contrast	Gain,gamma, saturation,contrast	Gain,gamma, saturation,contrast
Built-in software	Cloud 1.0 Ver	Cloud 1.0 Ver	Cloud 1.0 Ver
PC software	TCapture	TCapture	TCapture
Output port	USB2.0,SD,HDMI	USB2.0,SD,HDMI	USB2.0,SD,HDMI
Compatible OS	Window XP and above	Window XP and above	Window XP and above
Optical port	Standard C-Mount	Standard C-Mount	Standard C-Mount

Screen Features

Model	Retina Screen
Screen Size	11.6 inch
Aspect Ratio	16:09
Display Resolution	1920*1080
Display Type	IPS -Pro
Brightness	320cd/m2
Static Contrast Ratio	1000:01:00
Hdmi Port	1
Type	External Adaptor
Power Supply Type	12V,2A
Product Dimensions	282.00*180.5*15.3mm
Product Weight	600g

System Components

- One screen with brackets
- One camera (with SD card)
- Five butterfly screws
- HDMI L shaped adaptor
- 12V/2A power adapter
- Y power splitter cable
- 2m and 0.5m HDMI cables
- USB mouse and cable



Tucsen Photonics Co., Ltd.

Address: 6F NO.1 building Cai mao Zone ,756# Qi'an Road,
Gaishan Town, Cangshan Area, Fuzhou, Fujian, P. R. CHINA
Tel: 0086-591-88194580 Website: www.tucsen.com
Email: support@tucsen.com sales@tucsen.com

