

M430 & M530 Series

# SuperFLO™ Cassettes

The **SuperFlo™** Cassette, a new generation emerging in the Simport® Histology Family.

Molded from a special high-density polymer, these cassettes keep specimens safely submerged in liquid and are resistant to the chemical action of most histological solvents.

Lateral vent design for a maximum fluid exchange and efficient tissue processing. Sloped walls, creating a basket for small tissue management.

Available in loose, sleeved, or taped packaging for easy printer loading.



The **SuperFlo™** pore design allows a steady flow of fluid for maximum reagent exchange. Such a high level of fluid exchange results in less incidence of unfixed or under-processed tissues and faster fixation/processing of tissue specimens.

The cassettes have a 45-degree writing surface and are designed for optimal workflow in the most popular Cassette Printers.

The **SuperFlo™** can be opened and closed as required and they always relock securely without danger of specimen loss.



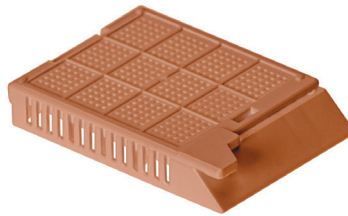
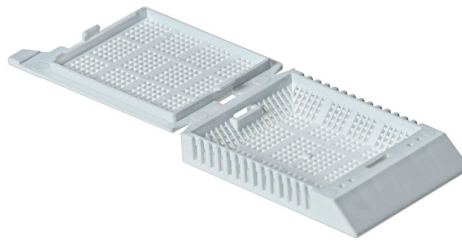
**M530 Series for Routine**  
Opening of 0.91 x 3.67 mm

  
For handwritten  
identification  
Case of 1500 units  
contained in  
3 dispenser boxes  
of 500 cassettes

  
For identification by  
cassette printers  
Case of 1000 units  
contained in  
25 stacks of  
40 taped cassettes


TAPED

○ White	M530-2	M430-2T
● Pink	M530-3	M430-3T
● Green	M530-4	M430-4T
● Yellow	M530-5	M430-5T
● Blue	M530-6	M430-6T
● Peach	M530-7	M430-7T
● Tan	M530-8	M430-8T
● Gray	M530-9	M430-9T
● Lilac	M530-10	M430-10T
● Orange	M530-11	M430-11T
● Aqua	M530-12	M430-12T



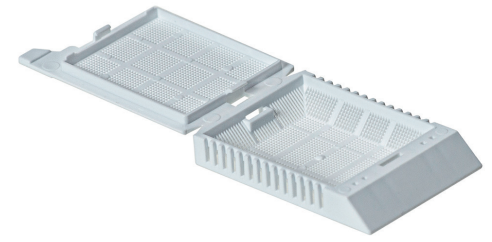
**M531 Series for Biopsy**  
Opening of 0.64 x 0.64 mm

  
For handwritten  
identification  
Case of 1500 units  
contained in  
3 dispenser boxes  
of 500 cassettes

  
For identification by  
cassette printers  
Case of 1000 units  
contained in  
25 stacks of  
40 taped cassettes

TAPED

○ White	M531-2	M431-2T
● Pink	M531-3	M431-3T
● Green	M531-4	M431-4T
● Yellow	M531-5	M431-5T
● Blue	M531-6	M431-6T
● Peach	M531-7	M431-7T
● Tan	M531-8	M431-8T
● Gray	M531-9	M431-9T
● Lilac	M531-10	M431-10T
● Orange	M531-11	M431-11T
● Aqua	M531-12	M431-12T



**M532 Series for Micro Biopsy**  
Opening of 0.30 x 0.30 mm

  
For handwritten  
identification  
Case of 1500 units  
contained in  
3 dispenser boxes  
of 500 cassettes

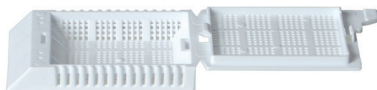
  
For identification by  
cassette printers  
Case of 1000 units  
contained in  
25 stacks of  
40 taped cassettes

TAPED

○ White	M532-2	M432-2T
● Pink	M532-3	M432-3T
● Green	M532-4	M432-4T
● Yellow	M532-5	M432-5T
● Blue	M532-6	M432-6T
● Peach	M532-7	M432-7T
● Tan	M532-8	M432-8T
● Gray	M532-9	M432-9T
● Lilac	M532-10	M432-10T
● Orange	M532-11	M432-11T
● Aqua	M532-12	M432-12T

### SuperFlo™ One-Piece Model

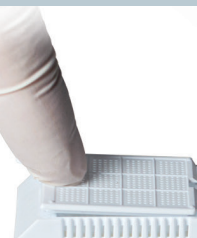
This model is a one-piece molded cassette so no separate lids to manage. It can be opened and closed up to five times guaranteed, securely relocking to avoid specimen loss.



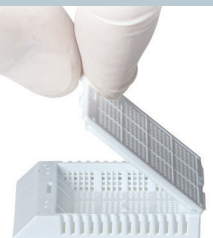
The cover of the SuperFlo™ is attached to the back of the base in an open position.



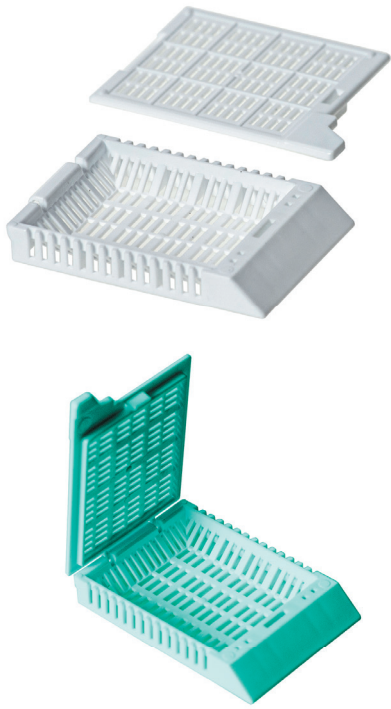
To close, simply tilt cover forward, holding it by the front tab.



Push cover down until a click is heard.

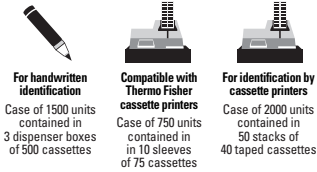


To open, tilt cover backward. It will remain attached to the base and can be closed again.



### M533 Series Cassettes for Routine

Opening of 0.91 x 3.67 mm

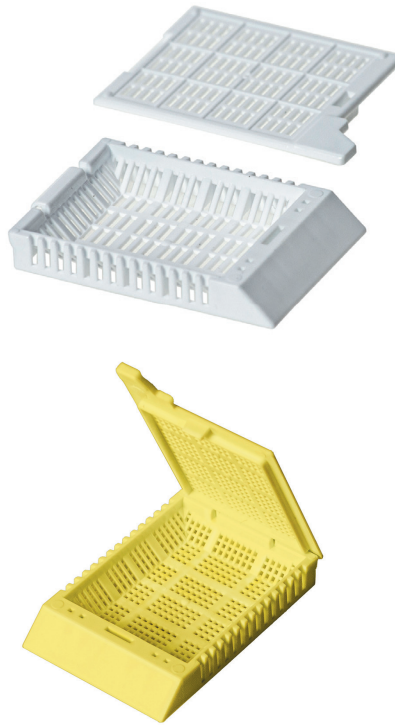


**For handwritten identification**  
Case of 1500 units contained in 3 dispenser boxes of 500 cassettes

**Compatible with Thermo Fisher cassette printers**  
Case of 750 units contained in 10 sleeves of 75 cassettes

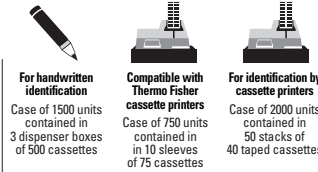
**For identification by cassette printers**  
Case of 2000 units contained in 50 stacks of 40 taped cassettes

	SLEEVE	TAPED
○ White	M533-2	M433-2T
● Pink	M533-3	M433-3T
● Green	M533-4	M433-4T
● Yellow	M533-5	M433-5T
● Blue	M533-6	M433-6T
● Peach	M533-7	M433-7T
● Tan	M533-8	M433-8T
● Gray	M533-9	M433-9T
● Lilac	M533-10	M433-10T
● Orange	M533-11	M433-11T
● Aqua	M533-12	M433-12T



### M534 Series Cassettes for Biopsy

Opening of 0.64 x 0.64 mm

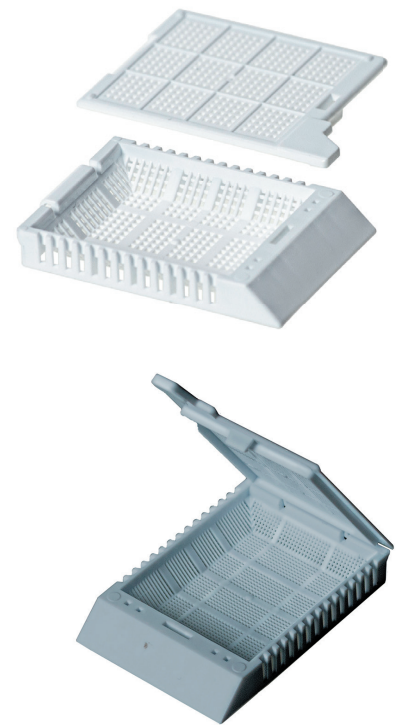


**For handwritten identification**  
Case of 1500 units contained in 3 dispenser boxes of 500 cassettes

**Compatible with Thermo Fisher cassette printers**  
Case of 750 units contained in 10 sleeves of 75 cassettes

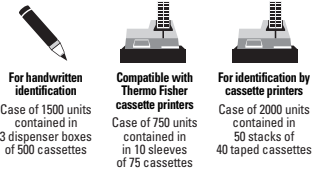
**For identification by cassette printers**  
Case of 2000 units contained in 50 stacks of 40 taped cassettes

	SLEEVE	TAPED
○ White	M534-2	M434-2T
● Pink	M534-3	M434-3T
● Green	M534-4	M434-4T
● Yellow	M534-5	M434-5T
● Blue	M534-6	M434-6T
● Peach	M534-7	M434-7T
● Tan	M534-8	M434-8T
● Gray	M534-9	M434-9T
● Lilac	M534-10	M434-10T
● Orange	M534-11	M434-11T
● Aqua	M534-12	M434-12T



### M535 Series for Micro Biopsy Cassettes

Opening of 0.30 x 0.30 mm



**For handwritten identification**  
Case of 1500 units contained in 3 dispenser boxes of 500 cassettes

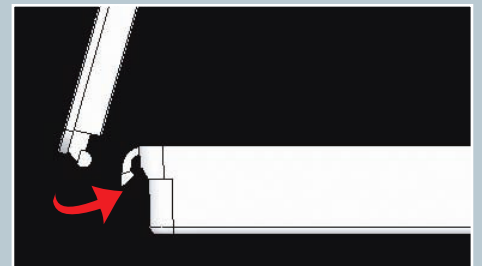
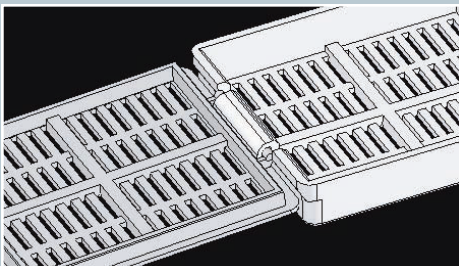
**Compatible with Thermo Fisher cassette printers**  
Case of 750 units contained in 10 sleeves of 75 cassettes

**For identification by cassette printers**  
Case of 2000 units contained in 50 stacks of 40 taped cassettes

	SLEEVE	TAPED
○ White	M535-2	M435-2T
● Pink	M535-3	M435-3T
● Green	M535-4	M435-4T
● Yellow	M535-5	M435-5T
● Blue	M535-6	M435-6T
● Peach	M535-7	M435-7T
● Tan	M535-8	M435-8T
● Gray	M535-9	M435-9T
● Lilac	M535-10	M435-10T
● Orange	M535-11	M435-11T
● Aqua	M535-12	M435-12T

### SuperFlo™ Hinged-Hook Model

This model has a special hinge that holds the base and the cover together. The hinge design allows the cassette to be opened and closed as often as required.

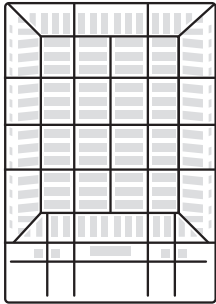


# SuperFLO™ Cassettes

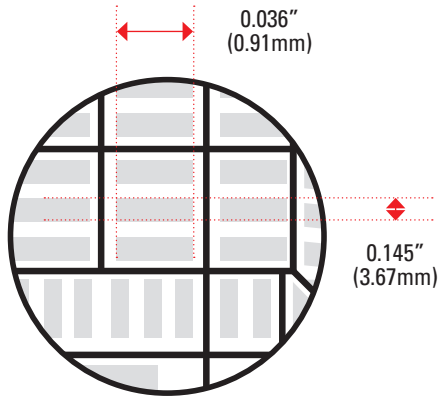


## Routine

Opening of 0.91 x 3.67 mm

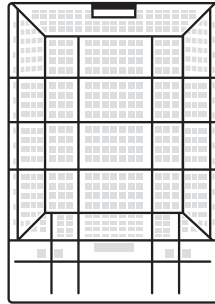


Actual size

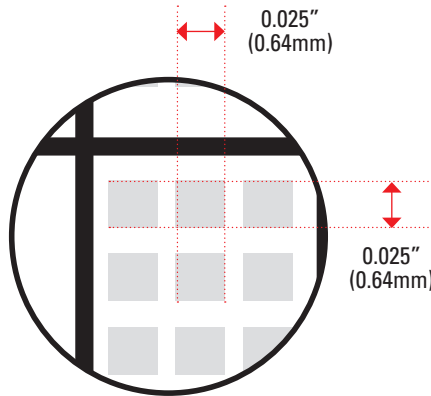


## Biopsy

Opening of 0.64 x 0.64 mm

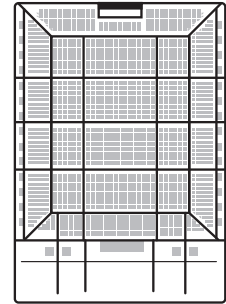


Actual size



## Micro Biopsy

Opening of 0.30 x 0.30 mm



Actual size

