

Model 125 Stainless Steel Winged Sentry with Lid

Model # SS-125-WSL-ST

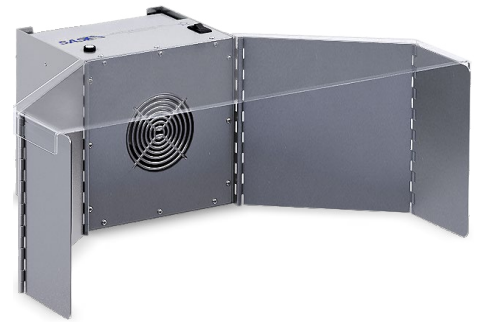


ESD-SAFE

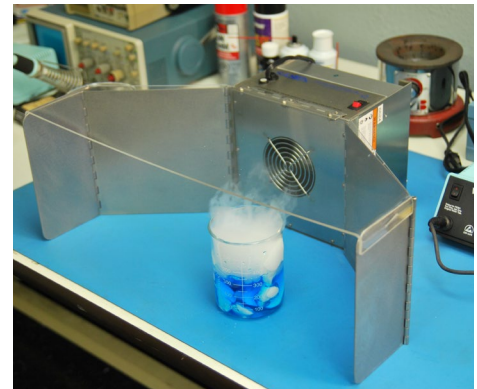
The **Stainless Steel Winged Sentry with Lid** offers an *ESD-Safe* solder fume extraction unit constructed to capture and filter of airborne contaminants at the work surface for stationary, benchtop applications. The adjustable “wing flaps” allow the operator to modify the workspace size to accommodate for the application. Also, the transparent hinged lid creates an enclosure, similar to a fume hood.

This system’s energy-efficient fan draws in airborne fumes and particulate into the high-quality filtration media before releasing filtered air back into the surrounding room. Typical filtration media includes **HEPA filters**, which offers up to 99.97% efficiency on particles 0.3 microns and larger, and **ASHRAE filters** that provide up to 95% efficiency on particles 0.5 microns and larger. For fire reliant applications like soldering, this filtration media is constructed from fire-retardant materials.

The **Stainless Steel Winged Sentry with Lid** offers an effective, quiet, and economical *ESD-safe* fume extraction solution for many benchtop soldering operations. *ESD-safe* solutions help prevent electrostatic discharge while soldering to help protect expensive electronic media. All of Sentry Air’s products are proudly manufactured in the United States.



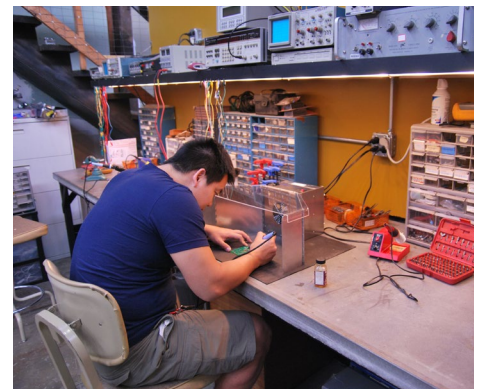
Model 125 Stainless Steel Winged Sentry with Lid



The Model 125 Stainless Steel Winged Sentry with lid can be utilized for a variety of applications.

Product Features

- **Includes:** clear acrylic lid and adjustable wing flaps
- ESD-Safe (electro-static discharge safe)
- Highly portable and lightweight
- Quiet, reliable, and low maintenance operation
- Sturdy construction
- Simple, quick “no tool” filter change
- Long filter life



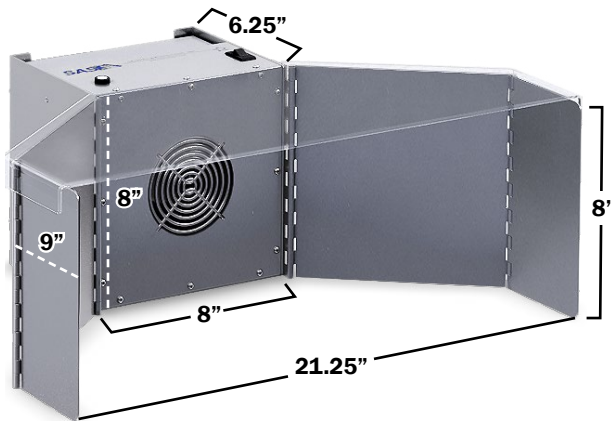
Operator using the Model 125 Stainless Steel Winged Sentry with lid to help protect from inhaling harmful soldering fumes.



21221 FM 529 Rd, Cypress, TX 77433
1.800.799.4609 • sales@sentryair.com

www.sentryair.com

Product Specifications



Shown with clear, acrylic lid.
Dimensions are approximate.

Base Unit Dimensions	Length: 6.25" Width: 8" Height: 8"
Cabinet Material	18 ga. stainless steel
Weight	Approx. 8 lbs.
Air Volume (approximately)	up to 70 CFM <i>(varies with filter media)</i>
Electrical	115/1/60, 0.46 amps 8' grounded power cord with NEMA 5-15P plug
Sound Level (High at 3' from inlet)	Approx. 66 dba
Main Filter Options	<i>Depending on the Application:</i> HEPA [up to 99.97% efficiency on particles 0.3 microns and larger] ASHRAE [up to 95% efficiency on particles 0.5 microns and larger]
Patent #	5,843,197



21221 FM 529 Rd
Cypress, TX 77433
1.800.799.4609
sales@sentryair.com

www.sentryair.com