

## CORIO CD-BC6 Heating circulator

for internal and external temperature applications with stainless steel bath tanks and working temperatures from +20 °C to +150 °C

### Product features

- Models for internal and external applications
- Bright, white, easy to read display
- Very quiet
- Easy switching between internal and external circulation
- USB connection
- High-quality bath tanks made of stainless steel with bath lid and drain tap
- External pump connections
- Integrated cooling coil for counter-cooling
- Easy pump change-over between internal and external circulation
- For internal and external applications
- Precise temperature control



### Performance values

#### 115V/60Hz (Nema N5-15 Plug)

|                                 |     |
|---------------------------------|-----|
| Heating capacity kW             | 1   |
| Viscosity max. cST              | 50  |
| Pump capacity flow rate l/min   | 16  |
| Pump capacity flow pressure psi | 4.8 |
| Power A                         | 10  |

#### 230V/60Hz (Schuko Plug - CEE 7/4 Plug Type F)

|                                 |     |
|---------------------------------|-----|
| Heating capacity kW             | 2   |
| Viscosity max. cST              | 50  |
| Pump capacity flow rate l/min   | 17  |
| Pump capacity flow pressure psi | 6.2 |
| Power A                         | 10  |

### Technical data

#### Available voltage versions

|                             |   |
|-----------------------------|---|
| Order No.                   | 9 012 506                                     |
| Available voltage versions: |   |
| 9012506.01                  | 100V/50-60Hz (Nema N5-15 Plug)                |
| 9012506.02                  | 115V/60Hz (Nema N5-15 Plug)                   |
| 9012506.03                  | 230V/50Hz (Schuko Plug - CEE 7/4 Plug Type F) |
| 9012506.03.chn              | 230V/50Hz (CN Plug)                           |

#### Bath

|                                     |                 |
|-------------------------------------|-----------------|
| Bath tank                           | Stainless steel |
| Bath cover                          | integrated      |
| Usable bath opening in. (W x L / D) | 5.1 x 5.9 / 7.9 |

|            |   |
|------------|---|
| 9012506.04 | 230V/50Hz (UK Plug Type BS1363A)              |
| 9012506.05 | 230V/50Hz (CH Plug Type SEV 1011)             |
| 9012506.13 | 230V/60Hz (Schuko Plug - CEE 7/4 Plug Type F) |

### Cooling

|              |            |
|--------------|------------|
| Cooling coil | integrated |
|--------------|------------|

### Electronics

|                                  |                     |
|----------------------------------|---------------------|
| Digital interface                | USB                 |
| Temperature control              | PID1                |
| Absolute temperature calibration | 1 Point Calibration |
| Temperature display              | LED                 |
| Temperature setting              | Keypad              |

### Temperature values

|  |              |
|--|--------------|
| Setting the resolution of the temperature display °C | 0.1          |
| Working temperature range °C                         | +20 ... +150 |
| Temperature stability °C                             | ±0.03        |
| Ambient temperature °C                               | +5 ... +40   |
| Temperature display resolution °C                    | 0.01 ... 0.1 |

### Other

|                |                         |
|----------------|-------------------------|
| Classification | Classification III (FL) |
| IP Code        | IP 21                   |
| Pump function  | Pressure Pump           |
| Pump type      | Immersion Pump          |

### Dimensions and volumes

|                                |                   |
|--------------------------------|-------------------|
| Weight lbs                     | 22                |
| Barbed fittings inner diameter | 8/12 mm           |
| Dimensions in. (W x L x H)     | 9.4 x 17.3 x 18.5 |
| Filling volume l               | 4.5 ... 6         |
| Pump connections               | M16x1 male        |

### Included in delivery

2 Barbed fittings for tubing 8 and 12 mm ID. (Pump connections M16x1 male)

For applications near or below ambient temperature: use a cooling coil or JULABO immersion cooler.

## All Benefits



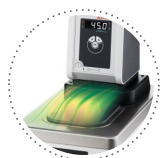
**100% Checked.**  
100% testing. 100% quality. Each JULABO Circulator undergoes thorough quality testing before leaving the factory.



**ATC.**  
Absolute Temperature Calibration, 1-point calibration (CD).



**Handle with ease.**  
Makes day-to-day work easy. Comfortably move your CORIO around by using the ergonomic handles (front and rear).



**Condensation protection.**  
Superb design solution. Integrated ventilation directs air over the bath lid and minimizes condensation.



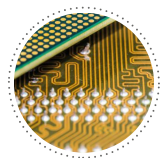
**Green technology.**  
Development consistently applied environmentally friendly materials and technologies.



**Internal. External.**  
The pump is controlled via a lever located directly below the display. Easily change between internal and external circulation.



**JULABO. Quality.**  
Highest standards of quality for a long product life.



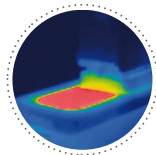
**Modern. Reliable.**  
High-grade components in every JULABO Circulator – platinum sensors, proven motor technology, CAN-Bus communication and much more.



**Satisfied customers.**  
11 subsidiaries and more than 100 partners worldwide guarantee fast and qualified JULABO support.



**Services 24/7.**  
Around the clock availability. You can find suitable accessories, data sheets, manuals, case studies, and more at [www.julabo.us](http://www.julabo.us).



**Solid.**  
Minimized energy loss through high-quality insulation.



**Stable.**  
Rubber feet allow for a secured footing of your CORIO to prevent damage to your laboratory equipment.



**Tidy.**  
The special drain tap for easy draining of bath fluids without tools.



**Touching permitted.**  
Optimum safety. The ergonomic plastic handle protects your fingers from hot surfaces.



**Quick start.**  
Individual JULABO consultation and comprehensive manuals at your disposal.



**Timer. Integrated.**  
CORIO circulators include an integrated timer function. When the set time has elapsed, a signal sounds and the device switches off. Setting range: 0 ... 999 minutes.



**Brilliant.**  
Very bright display makes it easy to read even from a distance.



**Connection. Easy.**  
Inclined pump connections (M16×1) facilitate the connection of applications. Each unit includes 2 barbed fittings of 8/12 mm diameter each.



**Everything at the front.**  
All operating controls and safety functions are accessed easily and comfortably from the front.



**Exact.**  
You can rely on it. PID1 control and 'Active Cooling Control' make the new CORIO precise and perfect.



**Locked in.**  
The lockable power plug guarantees safe connection. More process safety.



**Switch on. And off you go.**  
Intelligent operating concept. Ready for operation with just a few quick and easy steps.



**Early warning system for low liquid level**  
Maximum safety for applications, optical and audible alarm, allows user to refill bath fluid before the unit shuts down



**Connectivity.**  
Remote control made easy. CORIO CD circulators feature a USB connection.