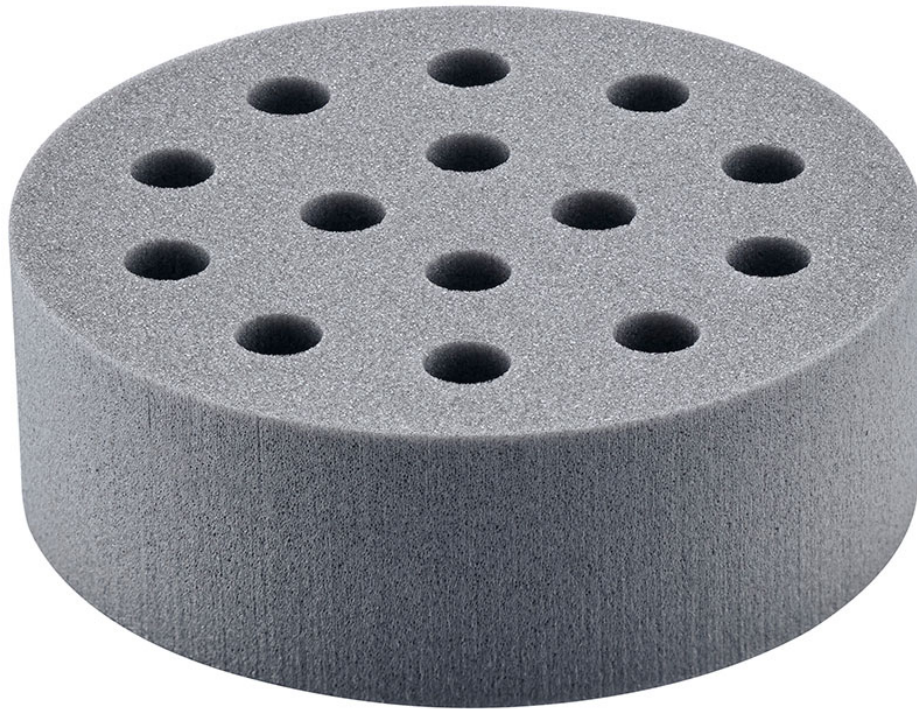




designed for scientists



MS 1.31 Test tube insert

/// Data Sheet

For inserting into universal attachment, for 14 test tubes \varnothing 10 mm

Material: ethylvinyl-acetate.*



designed for scientists

Technical Data

| | |
|--------------------------------------|----------------|
| Dimensions (W x H x D) [mm] | 136 x 265 x 60 |
| Weight [kg] | 0.006 |
| Permissible ambient temperature [°C] | 5 - 40 |

