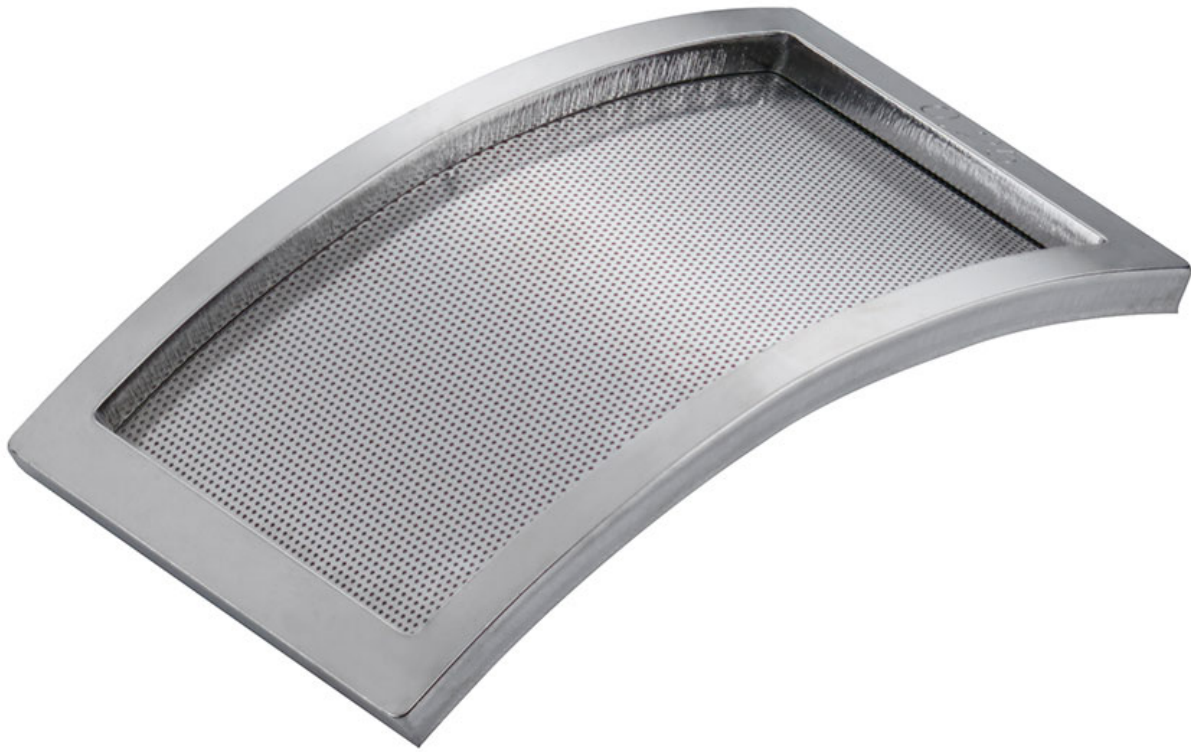




designed for scientists



## MF 0.25 Sieve

/// Data Sheet

Interchangeable sieve for insertion into the grinding heads ensures maximum particle size filtering.

Hole size: Ø 0.25 mm

stainl. steel (AISI 304)\*



designed for scientists

### Technical Data

Weight [kg]	0.018
Permissible ambient temperature [°C]	5 - 40

