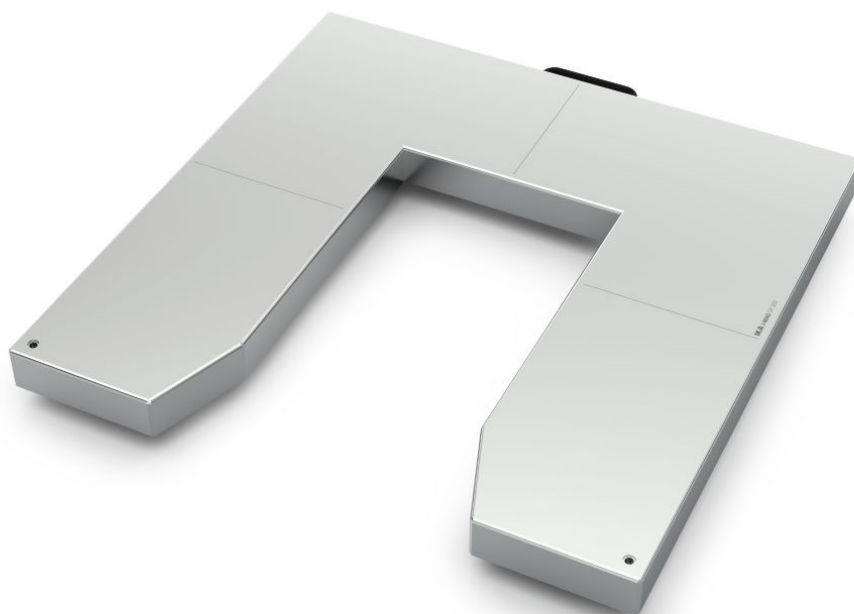




designed for scientists



I-MAG SP 300

/// Data Sheet

The stainless steel set-up frame extends the footprint and load capacity of the I-MAG industry magnetic stirrer. The robust frame is designed for barrels up to approx. 300 liters and a maximum load of 400 kg.

The use of the set-up frame is suitable for vessels with a diameter up to 700 mm (minimum diameter 300 mm).

The barrels or vessels used only stand on the set-up frame and not directly on the drive unit (I-MAG Drive). This allows the drive unit to be simply pulled out from under the barrel, without having to move the vessel standing on it which enables flexible use of the unit.



designed for scientists

Technical Data

Maximun load [kg]	400
Material	stainless steel 1.4301
Dimensions (W x H x D) [mm]	700 x 80 x 740
Weight [kg]	20
Permissible ambient temperature [°C]	5 - 40

