

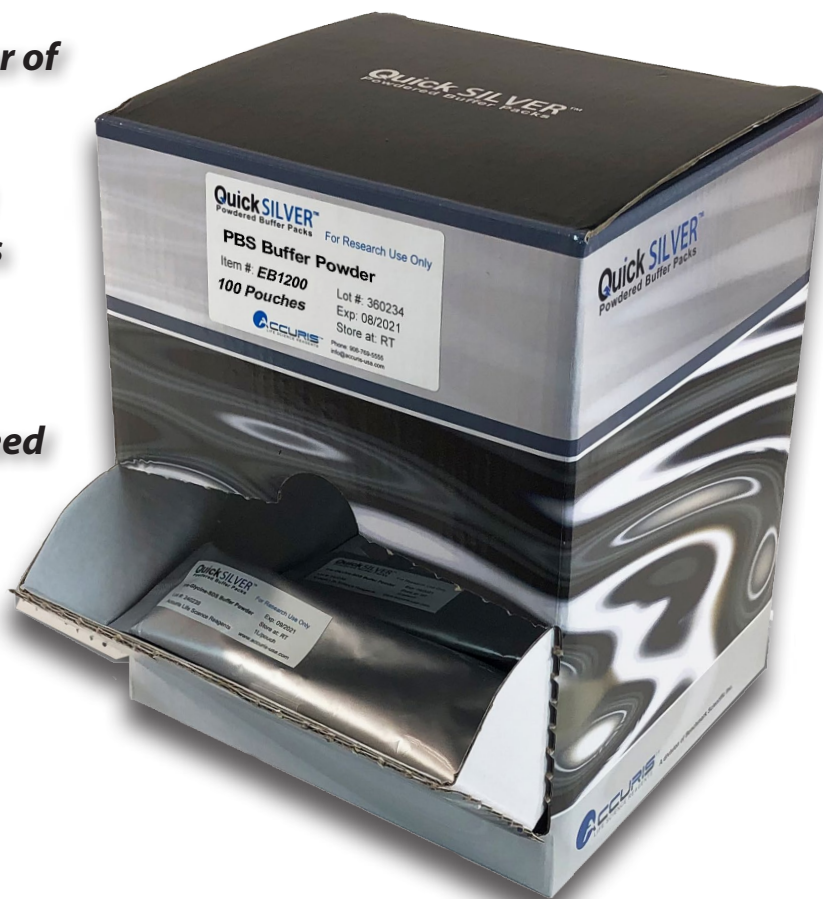
# QuickSILVER™

Powdered Buffer Packs

**CONVENIENT - QUICK - ECONOMICAL**

**Accuris QuickSilver Powdered Buffer Packs... Fresh buffer when you need it**

- **Premeasured pouches make 1 liter of 1X buffer solution**
- **Just empty pouch into water and stir - no diluting of stock solutions**
- **No pH adjustment necessary**
- **Quality and consistency guaranteed**
- **Nuclease and protease free**
- **Shelf stable**



**Electrophoresis Buffers:**  
TAE Tris-Glycine-SDS  
Tris-MOPS-SDS Tris-MES-SDS

**Western Blotting, ELISA and Cell Culture:**  
TBS TBST PBS PBST

# QuickSILVER™ Powdered Buffer Packs

Accuris QuickSILVER Powdered Buffer Packs will change the way buffers are prepared in your lab. Each premeasured pack contains the exact amount of quick dissolving powder to make 1L of buffer. Simply mix the powder into water and you have fresh, 1X buffer - no pH adjustments are necessary. Weighing of multiple components is eliminated, ensuring consistency in your buffers.

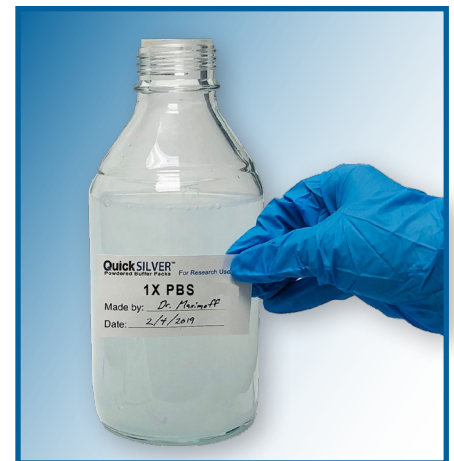
QuickSILVER buffer packs are shelf stable. Unlike stock solutions, there is no evaporation or crystallization of components. The foil packs are easy to open and supplied in a convenient shelf dispenser box. Preprinted labels are included for placing on bottles.



Easy-open foil packs:  
Each makes 1L of a 1X solution

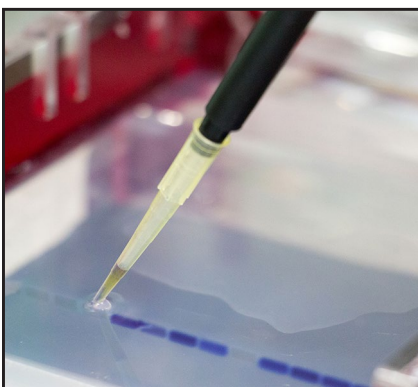


Quickly dissolves in 1L of water



Includes preprinted ID labels

## Nucleic Acid Electrophoresis Buffer



### QuickSilver™ TAE (Tris-acetate-EDTA)

TAE is ideal for separation of large DNA fragments in agarose gels and is used as running buffer and in gel preparation. TAE is the buffer of choice when recovering DNA from gels and when downstream processing involves enzymatic reactions. Final concentration of a 1X working solution is 40mM Tris, 20mM acetic acid, 1mM EDTA.

EB1000 QuickSilver TAE Buffer, 1L of 1X/pack, 100 packs

# Protein Electrophoresis Buffers

## QuickSilver™ TGS (Tris-Glycine-SDS)

Tris-Glycine-SDS is one of the most common running buffers used for SDS-PAGE. A 1X solution contains 25mM Tris, 192mM Glycine and 0.1% SDS.

**EB1100 QuickSilver Tris Glycine-SDS Buffer, 1L of 1X/pack, 50 packs**

## QuickSilver™ Tris-MES-SDS

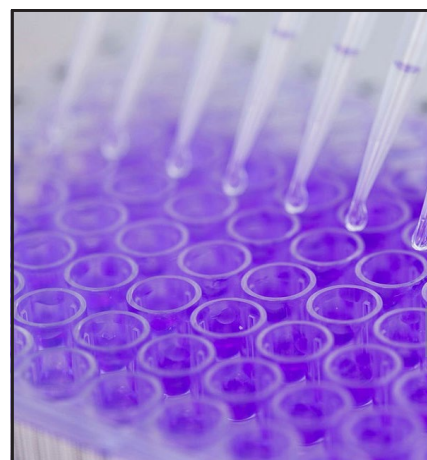
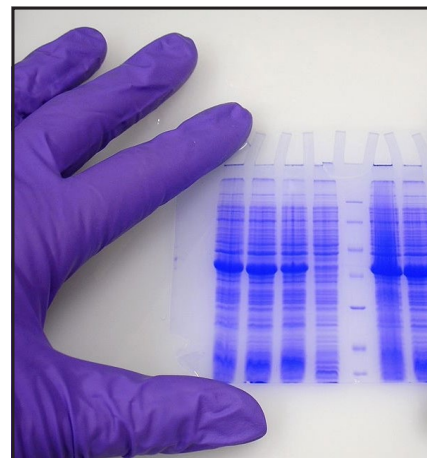
Small to medium molecular weight proteins can be resolved on SDS-PAGE gels using Tris-MES-SDS as a running buffer. Proteins resolve faster in gels using Tris-MES-SDS as a running buffer than those using Tris-MOPS-SDS. A 1X solution has a final concentration of 50mM Tris, 50mM MES, 0.1% SDS and

**EB1101 QuickSilver Tris-MES-SDS Buffer, 1L of 1X/pack, 50 packs**

## QuickSilver™ Tris-MOPS-SDS

Tris-MOPS-SDS is ideal for use as a running buffer when resolving medium to large proteins with SDS-PAGE. Gels run with Tris-MOPS-SDS buffer run slower than those using Tris-MES-SDS buffer. The final concentration of a 1X working solution is 50mM Tris, 50mM MOPS, 0.1% SDS and 1mM EDTA.

**EB1102 QuickSilver Tris-MOPS-SDS, 1L of 1X/pack, 50 packs**



# Western Blotting, ELISA, Cell Culture, Chromatography

## QuickSilver™ PBS and PBST

Because its osmolality and ion concentration closely mimic that of the human body, PBS is commonly used for cell culture applications, as well as HPLC and MS. PBST is a wash buffer and diluent for ELISA. The 1X PBS solution contains 137mM NaCl, 2.7mM KCl and 10mM phosphate. PBST is supplemented with 0.05% Tween-20.

**EB1200 QuickSilver PBS Buffer, 1L of 1X/pack, 100 packs**

**EB1201 QuickSilver PBST Buffer, 1L of 1X/pack, 100 packs**

## QuickSilver™ TBS and TBST

TBS and TBST are used to maintain pH within a very narrow range for a variety of applications including western blotting and immunoassays. The final concentration of a 1X working solution is 137mM NaCl, 2.7mM KCl, 50mM Tris. In addition, 1X TBST contains 0.1% Tween-20.

**EB1202 QuickSilver TBS buffer, 1L of 1X/pack, 100 packs**

**EB1203 QuickSilver TBST buffer, 1L of 1X/pack, 100 packs**



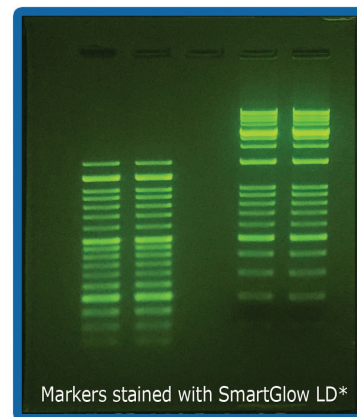
**Also available from Accuris Life Science Reagents**

## SmartGlow™ Safe Nucleic Acid Stain

SmartGlow is a safe alternative to ethidium bromide for visualization of DNA in agarose gels.

- >Excitation by UV or blue light
- >Non-mutagenic, environmentally safe
- >No special disposal methods required
- >20,000X Prestain or 6X Loading Dye

E4500-LD SmartGlow Loading Dye w/Safe Green Stain, 1ml  
E4500-PS SmartGlow Safe Green Prestain, 1ml



Markers stained with SmartGlow LD\*

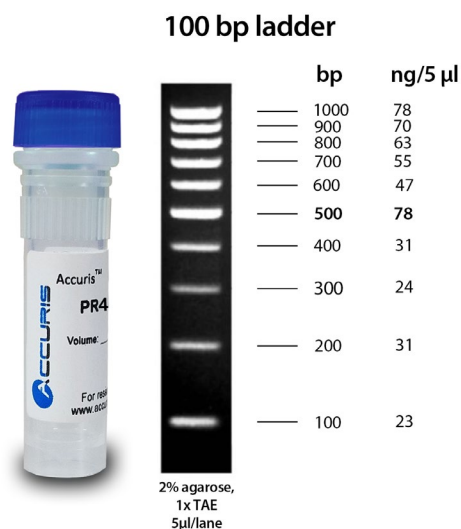
\*Excitation with Accuris SmartBlue™ Transilluminator. Imaged using Accuris SmartDoc™ and an iPhone® 8.

## SmartCheck™ DNA Ladders

SmartCheck DNA Ladders are designed for fast and accurate DNA sizing in agarose gels.

- >Three sizes - 50bp, 100bp and 1kb
- >Ready to use formulation with loading buffer and tracking dyes
- >Higher intensity reference bands
- >Each tube is suitable for 500 lanes (5µl/lane)
- >Ultra-pure production allows for economical ambient shipping

PR4005-500 SmartCheck DNA Ladder, 50bp, 500 lanes  
PR4010-500 SmartCheck DNA Ladder, 100bp, 500 lanes  
PR4100-500 SmartCheck DNA Ladder, 1kb- 500 lanes



## Benchmark Agarose LE

Benchmark Agarose LE is a general purpose agarose. Highly purified, it is refined using an advanced process that excludes the use of organic solvents.

- >Enhanced resolution and clarity
- >Low EEO/increased electrophoretic mobility
- >RNase, DNase and Protease free
- >Green choice - free from organic solvents

A1700 Benchmark Agarose LE, 25g  
A1701 Benchmark Agarose LE, 100g  
A1705 Benchmark Agarose LE, 500g

Benchmark Agarose LE is also available in convenient 0.5g tablets. Low Melt, High Resolution and Blended 3:1 agaroses are also available. Check our website for details.



Accuris Life Science Reagents is a division of Benchmark Scientific, Inc.  
www.accuris-usa.com 908-769-5555 info@benchmarkscientific.com