

EXI-600
Research Inverted Microscope

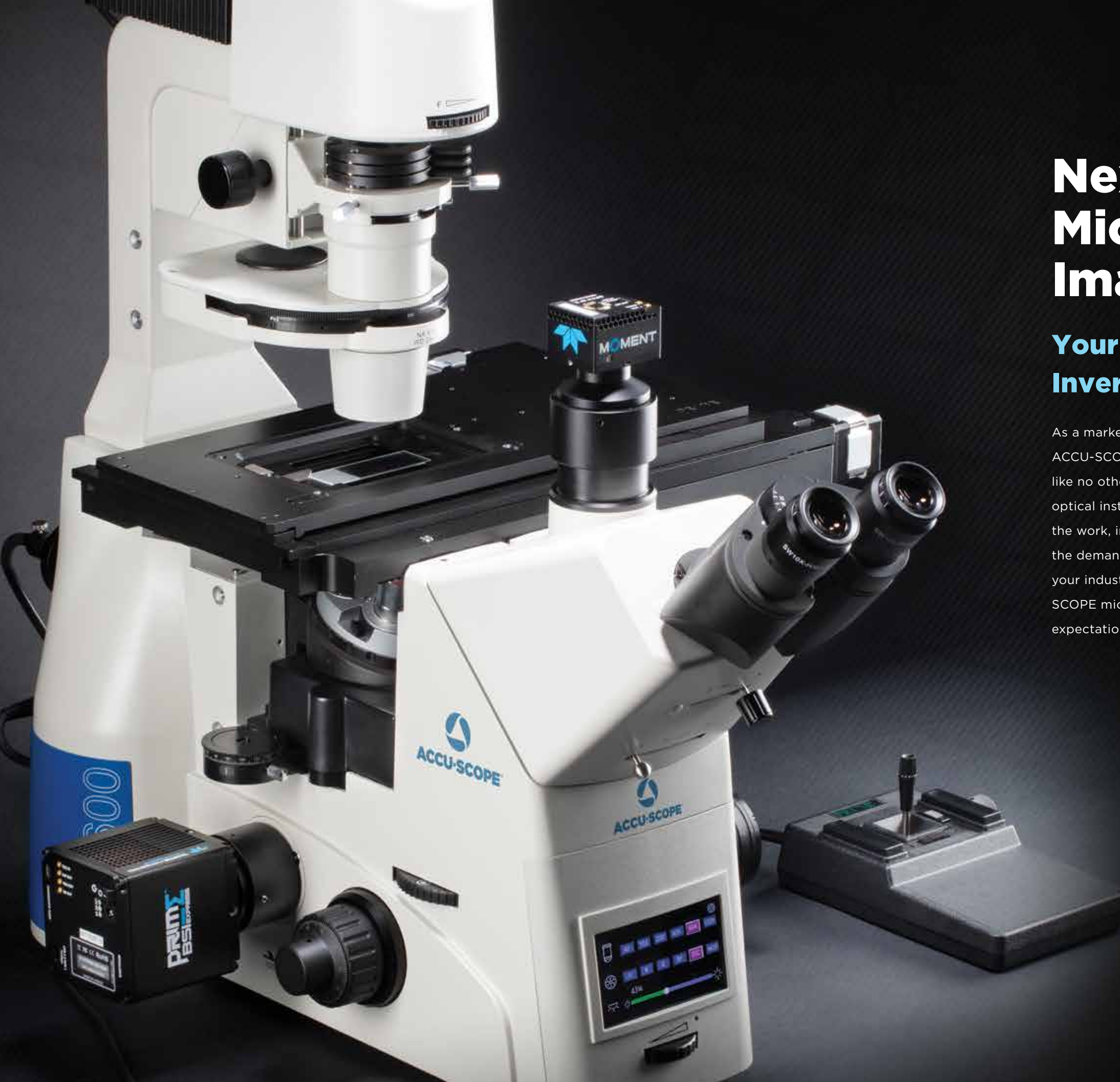


ACCU-SCOPE®

MICROSCOPY & IMAGING SOLUTIONS



Empowering Discovery. Advancing Results.



Next Generation Microscopy and Imaging Solutions

Your Open and Flexible Inverted Microscope Platform

As a market leader in quality microscopy and imaging solutions, ACCU-SCOPE blends precision, performance and outstanding value like no other manufacturer can. We deliver superb yet affordable optical instrumentation and microscopy innovations that help advance the work, improve the outcomes and empower the achievements of the demanding professionals we're privileged to serve. No matter your industry, discipline or individual endeavor, count on ACCU-SCOPE microscopy, imaging solutions and accessories to exceed expectation as you achieve your goals.

Packed With Features

EXI-600 Intelligent Manual
Inverted Microscope



1 Six-Position DIC Nosepiece

Intelligent sextuple nosepiece with click stops for precise positioning of the objective. Objective position is displayed on the LCD screen.



2 Multi-Application Condenser

6-position user-customizable turret condenser with high NA lens and long working distance. Features auto-iris open for included Ph1 and Ph2 annuli.



3 Six-Position Filter Cube Turret

Intelligent 6-position fluorescence filter cube turret allows quick and easy filter cube changing. LCD screen displays the current filter cube position.



4 LCD Screen Display

The front-positioned, back-illuminated LCD screen displays objective, filter cube and light intensity status.



5 Light Selector

Push-button shuttering of Transmitted Light and Reflected Light illumination.



6 3 Camera Ports

Three camera ports (left, right, top) come standard and allow multiple cameras to be mounted simultaneously.



7 Magnification Changer

The built-in magnification changer provides a quick magnification increase of 1.5X without the need to change objectives.



8 Bertrand Lens

The built-in Bertrand lens is easily engaged without removing eyepieces, and eliminates the need for a centering telescope for phase contrast, DIC and modulation contrast alignment.

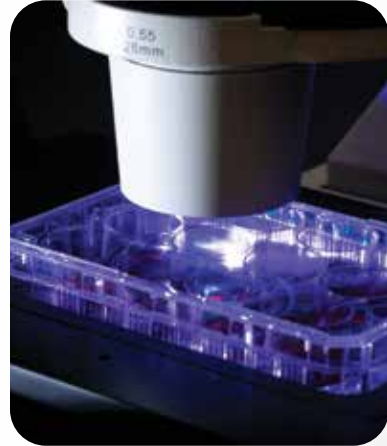


9 Easy Stage Access

The Tilting Illumination Pillar provides easy access to the stage to add and remove samples without disturbing other accessories or attachments.

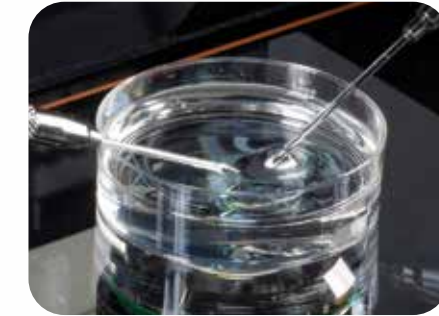


Live Cell Imaging



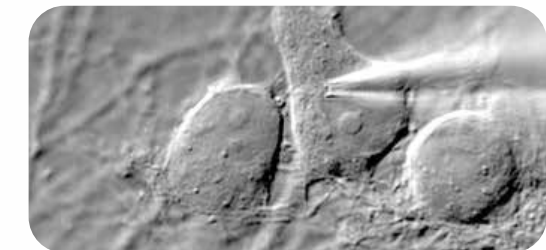
The modularity and stability of the EXI-600 make it an ideal platform for Live Cell Imaging. A variety of third-party accessories instantly transform the EXI-600 into an advanced multi-channel fluorescence imaging solution. Choose from a selection of LED fluorescence illuminators, motorized XYZ components, filter wheels, antivibration tables, environmental chambers and cameras to perform techniques such as time-lapse imaging, Z-stacks, automatic scanning of well plates, stitching, and more.

Micromanipulation



The exceptionally stable EXI-600 is ready to accept micromanipulation accessories for applications such as IVF, Stem Cell, transgenics and other studies involving microinjection.

Electrophysiology



The stable platform and its available contrast methods make the EXI-600 a great option for electrophysiology applications. Add electrophysiology accessories from your favorite third-party suppliers and start recording.

Solutions for Your Application



Fluorescence

The EXI-600's core fluorescence components provide the foundation for exceptional fluorescence imaging. Customize the EXI-600 with a variety of third-party accessories (e.g., light source, filter wheels, shutters) for your specific application.



Phase Contrast

View your unstained live cells under Phase Contrast. Available with objectives from 4X to 60X. Multi-application condenser comes standard with Ph1 and Ph2 (Ph3 or PhL is optional)



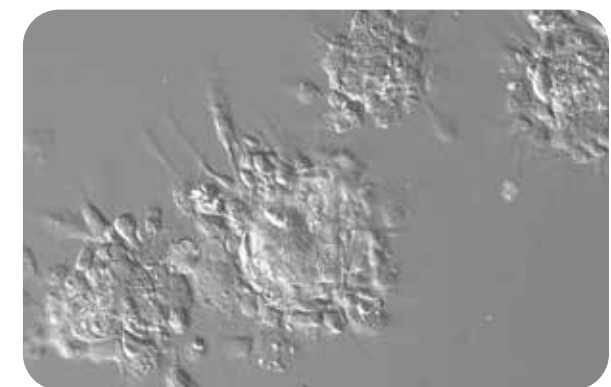
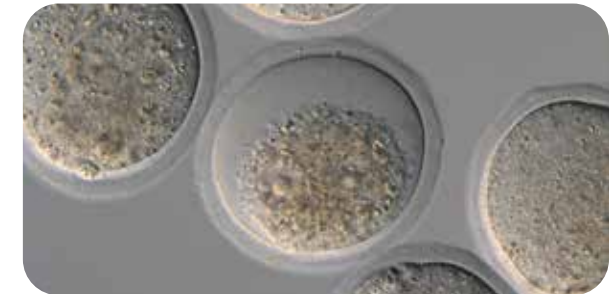
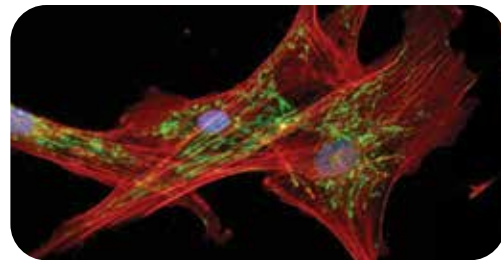
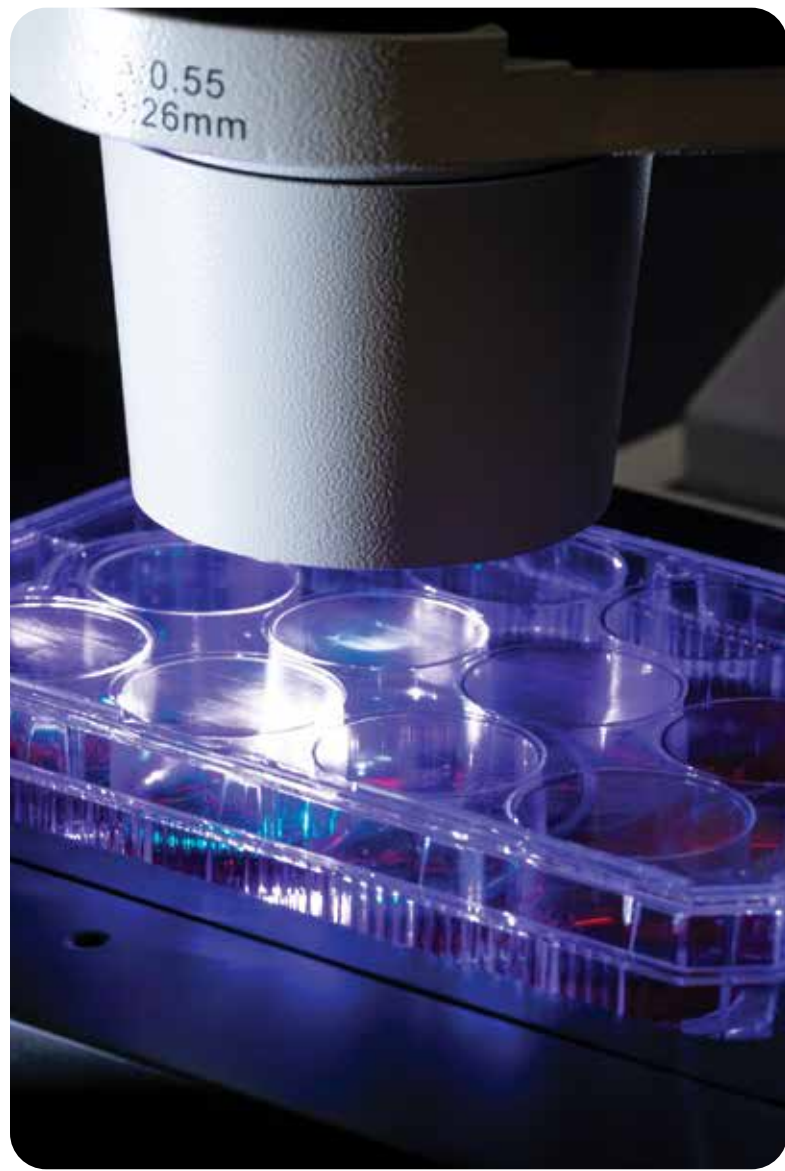
Modulation Contrast

High contrast technique produces 3-dimensional effect when observing unstained living cells in plastic vessels. Specialized objectives and condenser ensure optimal performance.



Nomarski Differential Interference Contrast (DIC)

High resolution and high contrast observation method for viewing unstained, transparent specimens. Not suitable for use with plastic tissue culture vessels.



A Wide Variety of Accessories



Take Control of Sample Positioning with Our Precision Manual Stages

Our 3-plate stages (long or short arm) are engineered with high precision to provide ultra-smooth movement. Choose from a wide selection of stage inserts.



Automate Your Imaging Experiments with Motorized Components

Upgrade your EXI-600 with software-controlled and motorized XYZ components from industry leaders such as Prior, Ludl, Sutter, and ASI.



Micromanipulation Solutions to Hold, Sample and Inject

Customize your EXI-600 to meet your specific needs for micromanipulation. The EXI-600 is compatible with micromanipulation solutions from Narishige, Eppendorf, Sutter and others.



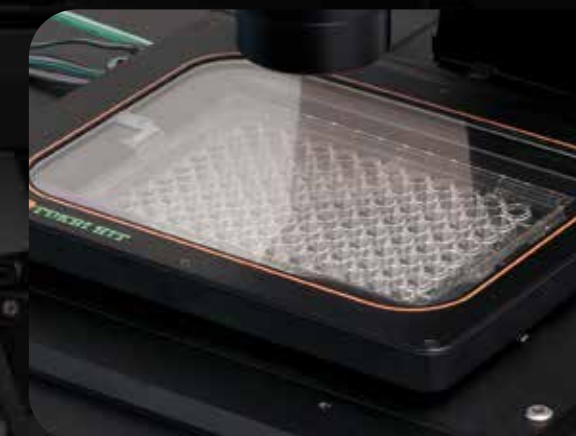
Capture, Measure and Share Your Results

With three camera ports, the EXI-600 is ready to support your most demanding imaging needs. Choose the perfect camera to meet your application needs from manufacturers such as ACCU-SCOPE, Lumenera, Photometrics, Hamamatsu, Andor, and others. Use our C-mount adapters to couple your cameras quickly and easily to the microscope.



See More with Brilliant Fluorescence Illumination

Upgrade or extend the capability of the EXI-600 with fluorescence light sources and components. Our filter sets are engineered for optimal performance with today's LED and solid-state light sources from Excelitas, Lumencor and others.



Environmental Control

Image living cells while they bathe in a temperature, humidity and gas-controlled environment. A variety of solutions are available from Tokai Hit, Biopetech, Okolab and other third-party suppliers.

Customize your EXI-600 to meet your needs.



Objectives

The key to quality images is in the optics. ACCU-SCOPE offers a range of high performance objectives specifically selected for each of the contrast methods available for the EXI-600.

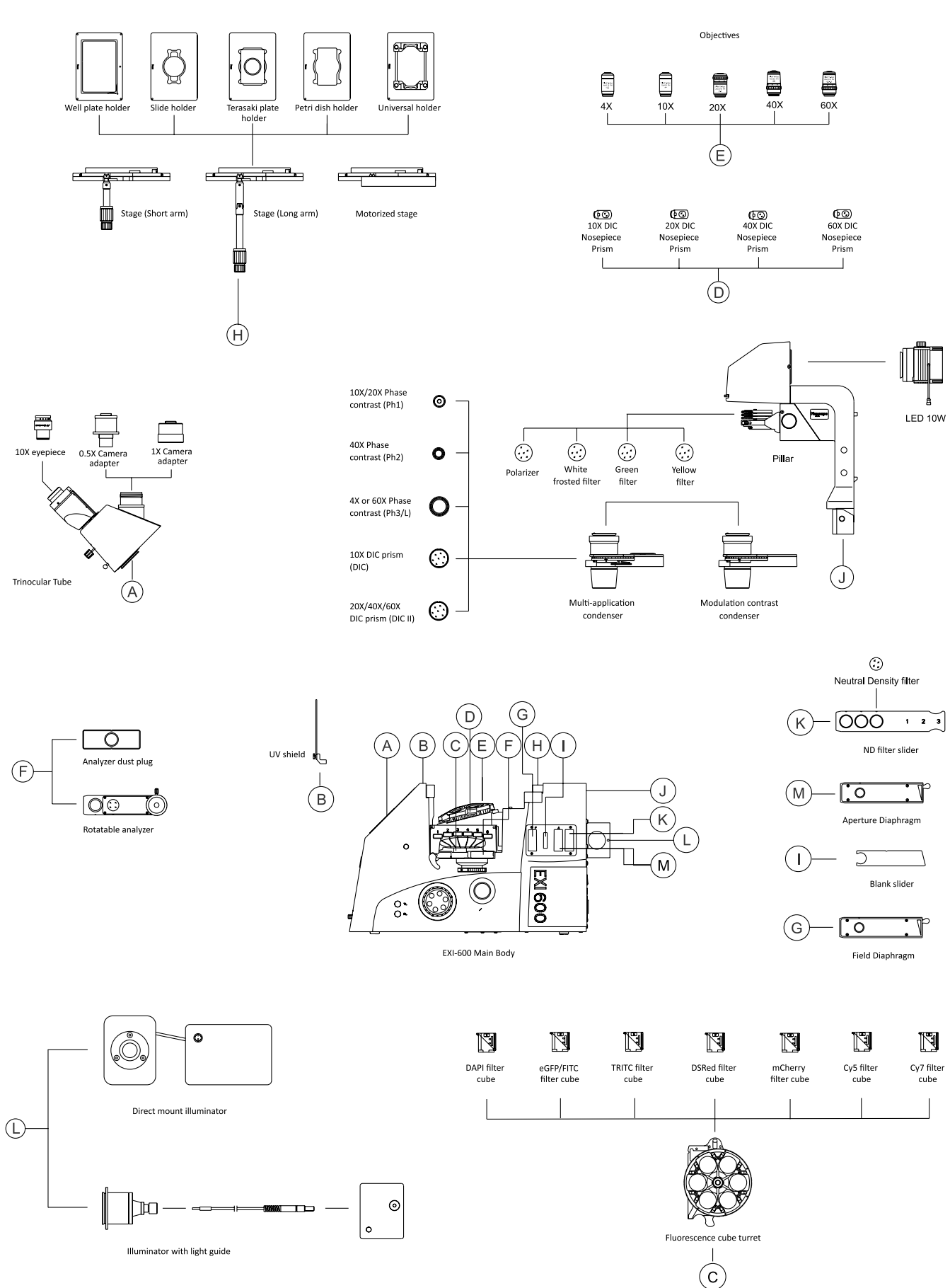
	Immersion	NA	WD (mm)	Cover Glass Thickness (mm)	Correction Ring	Spring Loaded	Brightfield	Fluorescence	DIC	Phase Contrast	Modulation Contrast
4X S-APO		0.13	17	—			●	●			
10X S-APO		0.30	7.4	—			●	●	●		
20X S-APO		0.45	7.5-8.8	1.2	0-2mm		●	●	●		
40X S-APO		0.60	3.0-4.4	1.2	0-2mm		●	●	●		
60X S-APO		0.70	1.8-2.6	1.2			●	●			
4X S-APO PH		0.13	17	—			○	○		●	
10X S-APO PH		0.30	7.4	—	0-2mm		○	○		●	
20X S-APO PH		0.45	7.5-8.8	1.2	0-2mm		○	○		●	
40X S-APO PH		0.60	3.0-4.4	1.2			○	○		●	
60X S-APO PH		0.70	1.8-2.6	1.2			○	○			
10X S-APO MC		0.30	10.5	—			○	○			●
20X S-APO MC		0.45	8.1-7.0	1.2			○	○			●
40X S-APO MC		0.60	3.6-2.8	1.2			○	○			●

● = Recommended ○ = Suitable

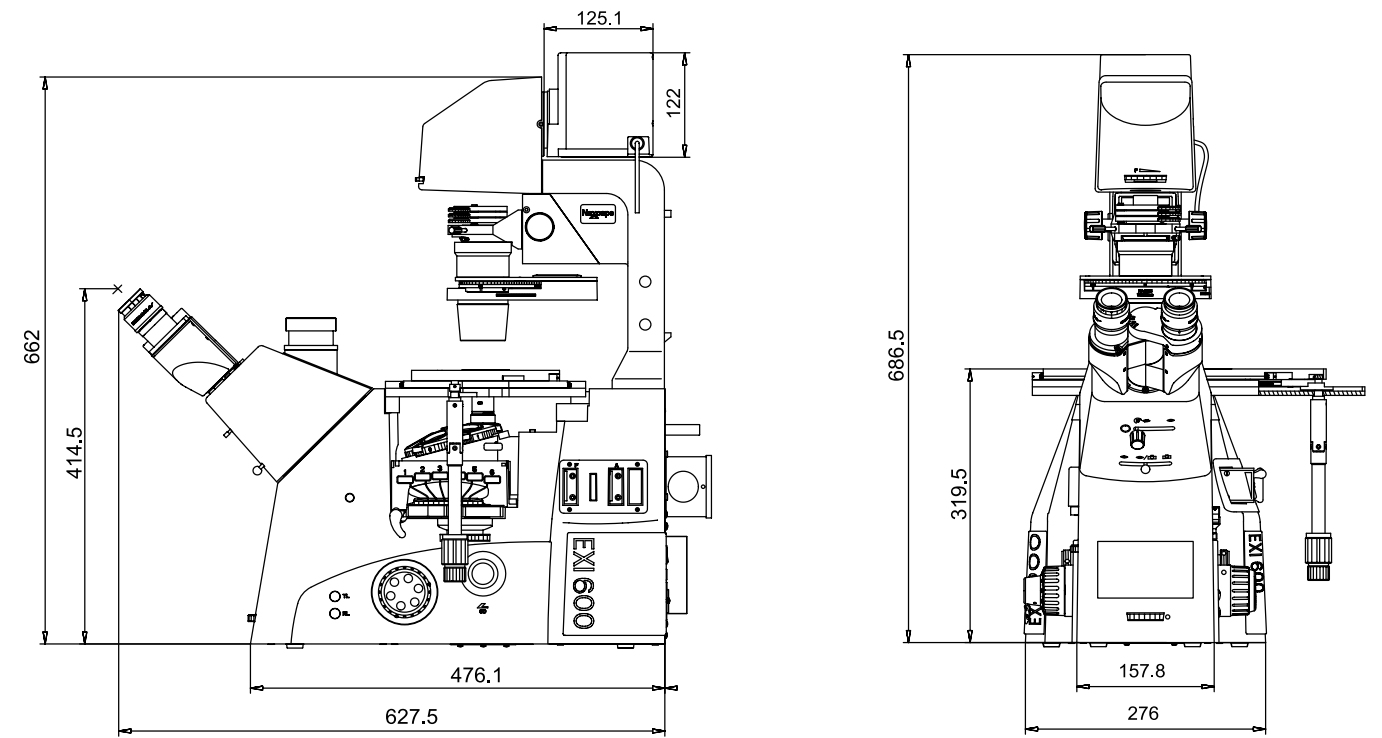
* Please contact ACCU-SCOPE for our latest objectives offering.



EXI-600 System Diagram



EXI-600 Dimensional Drawing



EXI-600 SPECIFICATIONS

Main Body	Optical System	Infinity Corrected, NIS 60; Focal length: 200mm
	Eyepiece	SWF 10X/22
	Field Number	FN18 with C-mount
	Intermediate Magnification Switching	3-position manual switching 1.0X/1.5X/open
	Bertrand Lens	Manual in/out, focusing
	Imaging Ports	3 Manual positions Eyepiece 100%, Left 100%, Right 80%, Top 80%
Focusing Unit	Planetary manual coarse/fine, 9mm movement range, 2mm/rotation coarse, 0.2mm/rotation fine	
Tube Body	Trinocular Tube	Inclined 45°, Built-In Bertrand Lens, 47-78mm Interpupillary Range, Camera Port (Field Number 16)
Transmitted Illumination	Transmitted Illumination Pillar with LED Lamphouse	10W LED, tiltable pillar, focusable/centerable condenser mount for Köhler alignment
Condenser	Multi-Application Condenser Turret	Long working distance (26mm), NA 0.55, 6-positions for phase contrast annuli, DIC and brightfield
	Modular Contrast Turret	4-position, 40mm working distance, NA 0.6
Stage	Manual Stage	3-plate mechanical stage, 130x85mm moving range, short or flexible long handle, holders for 96-well plate, 1x3" slide, Terasaki plate, Petri dish, universal
Nosepiece	Intelligent Nosepiece	Sextuple nosepiece, DIC prism slots
Epi-fluorescence	Intelligent Epi-Fluorescence Filter Cube Turret	6-positions: 1 Brightfield, Ph1, Ph2, Ph3/L, 2 DIC
	Fluorescence Illuminator	Centerable/adjustable field diaphragm, aperture diaphragm, 3-position filter holder, blank slider
Operating Conditions	Temperature: 0° - 40°, RH 60% Maximum	
Power	110-240V AC universal power supply; Input: 12V DC 2A	
Weight	~30kg	

Next Generation Microscopy and Imaging Solutions.



MICROSCOPY & IMAGING SOLUTIONS

WWW.ACCU-SCOPE.COM

73 Mall Drive, Commack, NY 11725
631-864-1000

			
 WARNING	READ THE CORRESPONDING MANUAL CAREFULLY TO ENSURE CORRECT USAGE OF ALL PRODUCTS		

Copyright © 2021 ACCU-SCOPE Inc. Printed in the U.S.A.
ACCU-SCOPE Inc. reserves the right to change and improve specifications
without notice due to technological or manufacturing advances.