

Vacuum Ovens

Digital Series



SHEL LAB vacuum ovens provide exceptional capabilities for fast and gentle drying of heat sensitive materials. They prevent residue accumulation on products and also allow safe drying of flammable solvents.

All SHEL LAB vacuum ovens are built with a stainless steel chamber that are easy to clean and have exceptional durability. Our double plenum design meets UL, CSA and EU safety requirements resulting in a cool outer surface.

The doors on these units have positive latch handles with spring-loaded glass to facilitate a good vacuum seal without hinge binds that shorten the gasket life. A selection of gaskets (for specific applications) and a small bench top footprint increase the versatility of these ovens.

To achieve required vacuum levels, users can choose from a 3/8 inch orifice or a KF25 fitting to withstand heavy use and minimize draw-down time. Maximum permitted end vacuum is 10 mTorr. Leak rate is 10 mTorr per hour.

FEATURES

- Fully Programmable Watlow Temperature Control Capable of 40 Step Ramp and Soak Profiles or 4 Files With 10 Steps Per File
- Digital Vacuum Gauge
- RS485 Communication

SHEL LAB stocks vacuum pumps and related accessories that are compatible with most applications. Our technical support team is available to advise on the perfect solution for your complete vacuum oven system purchase.

Vacuum Oven Applications

- Moisture Determination
- Out Gassing Solids
- Aging Tests
- Plating
- Chemical Resistance Studies
- Drying of Paper
- Rubber and Textiles
- Desiccating
- Dry Sterilization
- Out Gassing Liquids
- Vacuum Storage
- Electronic Process Control



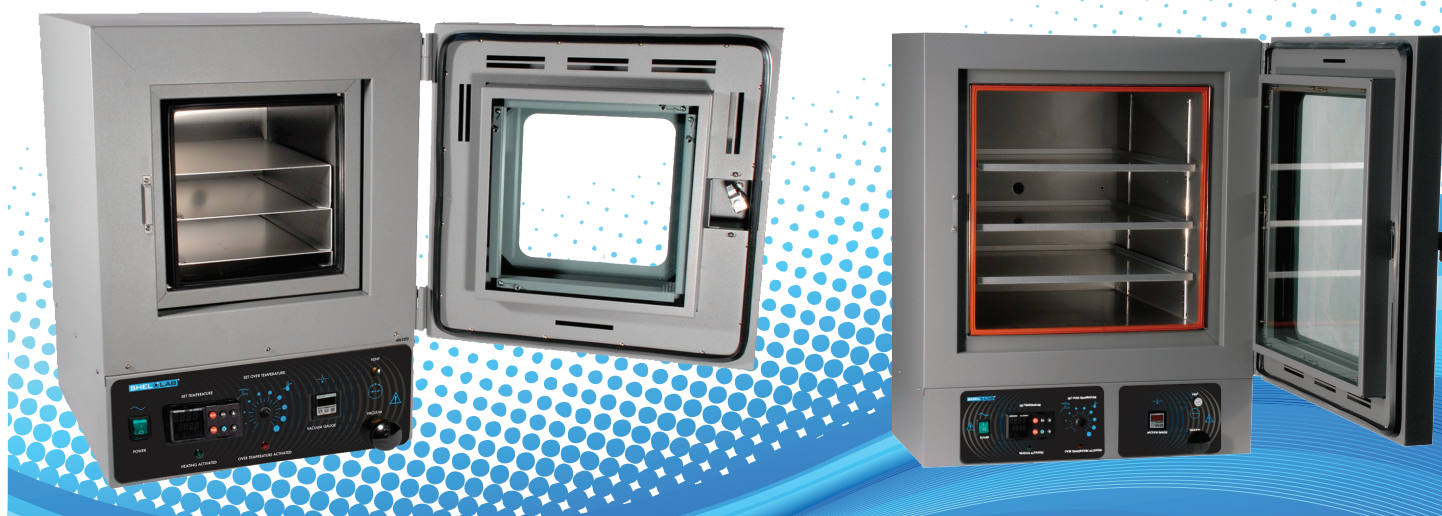
Precise Temperature Control -

- Heat-up Time 90 minutes to 150°C
- Temperature Adjustable by 0.1°C
- Temperature Uniformity +/- 6% of Set Point
- Temperature Range Ambient + 10°C to 220°C

Vacuum Control -

- Vacuum Range
inch Hg (-3.0 to -29.9)
kPa (-10 to -101)
mbar (-101 to -1010)
- Display Range (Display Resolution)
inch Hg (0 to 29.9)
kPa (5 to -101)
bar (0.05 to -1.013)

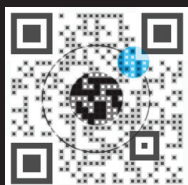
2 Year
Limited
Warranty!



Vacuum Ovens	Model Number			
	110-120V 220-230V	SVAC1 SVAC1-2	SVAC2 SVAC2-2	SVAC4 SVAC4-2
Exterior Dimensions (wxdxh)	Inches	17.5 x 22.8 x 23.5	20.5 x 29.5 x 26.3	26.5 x 34.5 x 32.3
	cm	44.5 x 57.8 x 59.7	52.0 x 75.0 x 66.7	67.3 x 87.6 x 81.9
Chamber Dimensions (wxdxh)	Inches	9.0 x 12.0 x 9.0	12.0 x 20.0 x 12.0	18.0 x 24.0 x 18.0
	cm	22.8 x 30.4 x 22.8	30.4 x 50.8 x 30.4	45.7 x 60.9 x 45.7
Oven Chamber Capacity	cu ft	0.6	1.7	4.5
	L	16	47	127
Number of Shelves	Included	3	3	3

*All specifications are determined by using average values on standard equipment at an ambient temperature of 25°C (77°F) and line voltages within +/-10% of unit type (115V/230V). Temperature specifications follow DIN 12880 methodology.
We reserve the right to alter technical specifications at any time.
For a complete list of product specifications, call (800)322-4897 or visit the SHEL LAB website, www.shellab.com

0740515 4/14



SHEL LAB®

www.shellab.com
1-800-322-4897