

Model 400/450 Python Portable Floor Sentry – 12' Python Hose



Model # SS-400/450-PYT

The **Model 400/450 Python Fume Extractor** provides an engineering safety control for use in hard-to-reach applications where an extended flexible hose is needed [i.e. *tank welding*]. The included 12 foot long, flame-retardant flex hose features a magnetic capture hood with handle that enables the operator to attach it to a surface without having to manually hold the hose in place while capturing welding smoke, dust, or fumes. An optional 25 foot hose is also available.

Typical applications for this unit are *maintenance welding, light grinding applications, stainless steel tank welding, welding in confined spaces, fume extraction in elevated spaces [e.g. asbestos in ceiling and rafters], rapid location welding applications, stainless steel pipe welding, welding on metal beams, VOC removal, and particulate and fume removal.*

Other features of this system include quiet operation, heavy-duty casters for convenient mobility, and high efficiency filtration. Filtration media is selected depending on the application being performed. Typical media includes: **HEPA** (up to 99.97% efficiency on particles 0.3 microns and larger), **ASHRAE** (up to 95% efficiency on particles 0.5 microns and larger), **ULPA** (up to 99.9995% efficiency on particles 0.12 microns and larger), **Activated Carbon**, and **specialty-blended filter media** [i.e. acid gas, mercury, aldehyde, and ammonia].

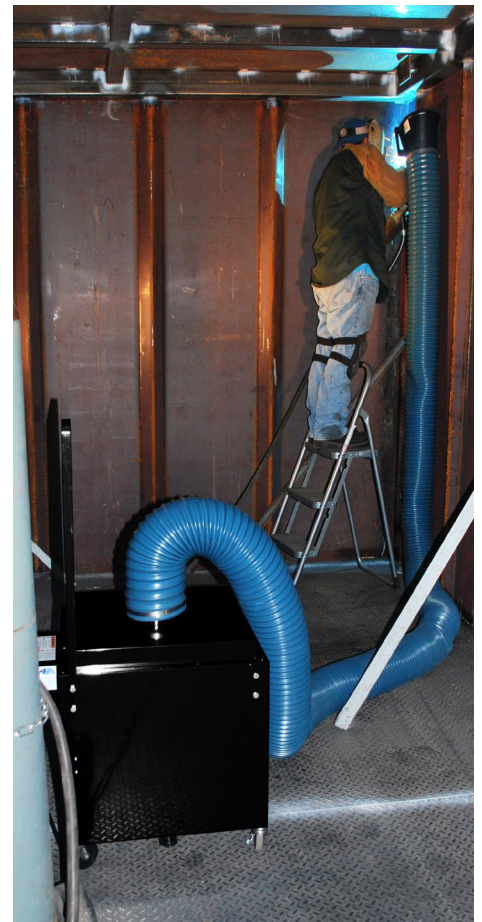
This **Model 400/450 Python Portable Floor Sentry** combines quiet operation, energy-efficient technology, and a unique design to ease fume extraction in hard-to-reach areas. A smaller model [SS-300-PYT] is also available.

Product Features

- **Includes:** variable speed controller, portability handle, heavy-duty casters, magnetic welding hood with handle, and 12' flex hose with 360° movement
- **Optional:** 25' flex hose, Magnehelic Gauge, and hour counter
- Quiet, reliable, and low maintenance operation
- Low power consumption
- Long filter life
- Simple, quick “no tool” filter change



Model 400/450 Python Portable Floor Sentry



A welder utilizing the Python Portable Fume Extractor to help protect from welding fumes in a hard-to-reach area, fully taking advantage of the long flexible hose and magnetic hood.



21221 FM 529 Rd, Cypress, TX 77433
1.800.799.4609 • sales@sentryair.com

www.sentryair.com

Fume & Particulate Removal

Product Specifications

MADE IN THE USA



SINCE 1983



Dimensions are approximate.

Base Unit Dimensions (L x W x H)	400: 22.5" x 20" x 19.5" 450: 22.5" x 20" x 21.75" <i>(includes control box in length)</i>
Arm Dimensions	6" diameter (4" optional) 12' long fire-retardant flexible hose (25' optional) 11" x 6.5" magnetic hood with handle
Cabinet Material	16 ga. carbon steel
Weight	Approx. 50 - 110 lbs.
Air Volume (approximately)	400: 50 - 700 CFM 450: 0 - 877 CFM <i>(from low to high)</i>
Electrical	400: 115/1/60, 2.5 amps 220/1/50 or 60, 1.5 amps 450: 115/1/60, 5.2 amps 8' grounded power cord with NEMA 5-15P plug
Sound Level (3' from inlet)	400: Approx. 60 dba (high) 450: Approx. 71 dba (high)
Main Filter Options	<i>Depending on the Application:</i> 400 - Chemical: Activated Carbon Specialty-Blended Filter Media [i.e. acid gas, mercury, aldehyde, and ammonia] 400 & 450 - Particulate: HEPA [up to 99.97% efficiency on particles 0.3 microns and larger] ASHRAE [up to 95% efficiency on particles 0.5 microns and larger] ULPA [up to 99.9995% efficiency on particles 0.12 microns and larger]
Patent #	5,843,197



21221 FM 529 Rd
Cypress, TX 77433
1.800.799.4609
sales@sentryair.com

www.sentryair.com