



SCIOLOGEX
Centrifuges



Ezee series Mini Micro Centrifuge

Features

- Ideal for microfiltration and quick spin-downs
- Easy-to-use with dual start/stop function
- 7000rpm fixed speed
- Compatible with 2mLx8 and PCR8x2 rotors
- Quiet running, noise level $\leq 45\text{dB}$
- Rotor change without tools
- Accelerates and brakes in seconds
- Available in two colors i.e., green, blue



Quiet operation



Vibration free



CE  FC

Specifications

	Ezee
Max. Speed	7000rpm
Max. RCF	2680xg
Rotor Capacity	0.2/0.5/1.5/2.0mLx8; 0.2mLx16 PCR strips or 0.2mLx2 PCR 8 strips
Run Time	Continuous operation
Driving Motor	DC motor
Power	AC100-240V/50Hz/60Hz 20W
Noise Level	$\leq 45\text{dB}$
Dimension [DxWxH]	160x170x122mm
Weight	0.5kg
Certification	CE cTUVus FCC MCA

Available rotors



A08-2

Cat. No. 19400015

Max. speed: 7000rpm
Max. RCF: 2680×g
Rotor capacity: 2mL/1.5mL×8, 0.2mL×8, 0.5mL×8
Rotor material: High strength plastic
Available rotor adapters: SA02P2, SA05P2



A02-PCR8

Cat. No. 19400017

Max. speed: 7000rpm
Max. RCF: 2680×g
Rotor capacity: 0.2mL×16 PCR strips, 0.2 mL×2 PCR 8 strips
Rotor material: High strength plastic

Available adapters



SA02P2

Cat. No. 19400029

0.2mL rotor adapter
Used with A08-2 rotor
8pcs/pk



SA05P2

Cat. No. 19400026

0.5mL rotor adapter
Used with A08-2 rotor
8pcs/pk

High Speed Micro-Centrifuges

High Speed Micro Centrifuge

High speed micro centrifuges are widely used in physical and chemical analysis, biochemistry, cellular and molecular biology, clinical Labs ideal for high-end research applications

- Sedimentation of cells and viruses
- Separation of sub-cellular organelles
- Isolation of macromolecules such as DNA, RNA, proteins or lipids

Precise control

- Brushless DC motor accelerates quickly to the set speed
- High accuracy of speed in ± 20 rpm
- Digital timer adjustable from 30 sec. to 99 min or set for continuous run
- Timer starts only when the set speed is achieved and then maintains the accuracy of separation time.

Conforms to international safety standards and regulations

- SCIOLOGEX centrifuges pass CE, cTUVus and FCC requirements. certifications, they are certified by TUV. All SCIOLOGEX test items are proven with the high level of reliability and confidence according to IEC/EN 61010-1, and pass MCA test according to IEC/EN61010-2-20, including rotor containment and bio-safe tests.
- Quiet operation, maximum reliability
- High strength metal casing ensures security during centrifugal process
- Dual door interlock design for safety(D3024 & D3024R)
- Gentle braking at low speed with efficient separation

Ergonomic design

- User-friendly large LCD display shows real-time information
- Both RPM or G-force can be set and displayed
- The parameters can be modified after the set speed is reached.
- The short spin function is used for quick spins by pressing and holding PULSE key. The centrifuge speed can be accelerated and held at the target speed
- Automatic lid-lock release prevents sample warming and allows easy access(excluding D3024R)
- Concise display and Sound-alert



SCI-12 High Speed Mini Centrifuge



Brushless DC motor



LCD display



Specifications

SCI-12

Max. Speed	15000rpm(500-15000rpm), increment: 100rpm
Max. RCF	15100xg, increment: 100xg
Speed Accuracy	±20rpm
Rotor Capacity	0.2mL/0.5mL/1.5mL/2mL×12
Run Time	30sec-99min/Continuous
Driving Motor	Brushless DC motor
Safety Devices	Door interlock, Over-speed detection, Over-temperature detection, Automatic internal diagnosis
Power	Single-phase, AC100V-240V, 50Hz/60Hz, 3A 100W
Noise level	≤54dB
Acceleration /Braking time	11s ↑ /9s ↓
Dimension[D×W×H]	255×245×140mm
Weight	6kg
Certification	EMC, CE, FCC, ICES, cTUVus, CB
Advanced features	Speed/RCF switch, Short-time run function, sound-alert function

Features

- Powerful centrifugal force of 15100xg and max. speed of 15000rpm ideal for various applications
- Brushless DC motor drive quickly accelerates the rotor to set speed
- Quiet working, Low noise ≤56dB
- SCI-12 is proven by IEC/EN 61010-1
- SCI-12 Plus passed the rigorous rotor containment test and accredited with CE, cTUVus, FCC certificates, and MCA test. MCA test according to IEC/EN61010-2-20

Available rotors



Cat. No. 19400010

A12-2P for SCI-12

Max. speed: 15000rpm
 Max. RCF: 15100xg
 Rotor capacity: 2mL/1.5mL×12, 0.2mL×12, 0.5mL×12
 Rotor material: High strength plastic
 Available rotor adapters: A02P2, A05P2

Available adapters



Cat. No. 19500001

A02P2

0.2mL rotor adapter
 Used with A12-2, A12-2P, AS24-2 and A24-2P rotors
 24 pcs/pk

Cat. No. 19500002

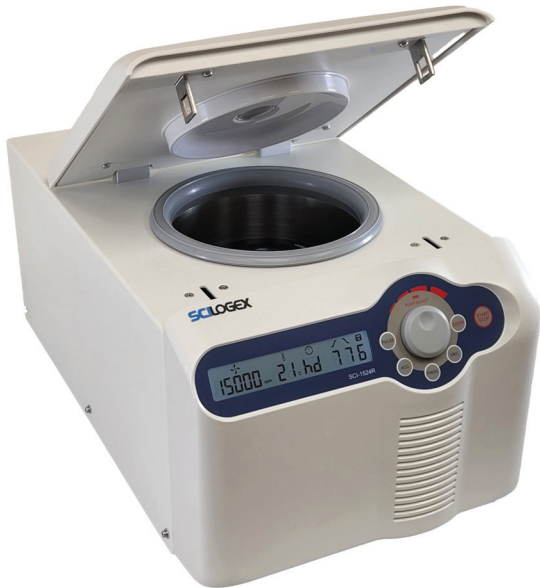
A05P2

0.5mL rotor adapter
 Used with A12-2, A12-2P, AS24-2 and A24-2P rotors
 24 pcs/pk

Centrifuges

SCI-1524R

High-speed Refrigerated Micro Centrifuge



Applications

Ideal for centrifugation of temperature sensitive samples, such as live cells, animals or proteins. It allows them to be used in a multitude of applications, including pelleting of DNA and RNA samples, pelleting of PCR amplified nucleic acids, separation of antibody and protein precipitates, performing enzymatic tests, removing cell debris from cell homogenates, and achieving bacterial and yeast cell fractionation.



Features

- Electronic Magnetic door locking system – the lid can be closed with one figure touch
- Precooling, the compressor automatically starts cooling as long as the set temperature is lower than the ambient temperature
- Sound indicator at the end of running.
- Temperature range -20°C to 40°C
- Short pre-cooling time of only 7minutes from room temperature to 4°C
- Up to 9 program storage capacity
- 3-layer sealed rotors ensure safe centrifugation
- High-strength aluminum alloy rotor can be fully autoclavable at 121°C
- Rotor imbalance detection alarm
- Acceleration/ deceleration in 9 steps, allows gentle braking at low speed for better separation
- Five rotors with 0.2mL, 0.5mL, 1.5mL, 2mL and 5mL centrifuge tubes/ PCR tubes capacity
- An external condensation tank prevents water accumulation within centrifuge chamber

Specifications	SCI-1524R
Max. Speed	15,000rpm (200–15,000rpm) in 100rpm increments.
Max. RCF	21,380 × g, step: 10 × g
Capacity	1.5/2mL × 24, 0.5mL × 36, PCR8 × 4, 5mL × 12, 5mL × 18.
Temperature setting	-20°C – 40°C
Run Time	30s–99 min; HOLD (continuous running)
Acceleration and deceleration time	25s ↑ 25s ↓
Motor Type	Brushless DC motor
Safety Performance	Dual door lock, over-speed detection, over-temperature detection with Internal diagnosis system.
Power Requirements	Single-phase, 200V–240V, 50Hz/60Hz, 500W/100V–120V, 50Hz/60Hz, 500W
Noise	≤56dB
Dimensions[WxDxH]	332 × 553 × 283mm
Weight	30kg
Certification	CE cTUVus FCC
Other functions	Rotation speed/RCF switchover, inching operation, running process indicator, sound alert. Acceleration/ deceleration in 9 steps, program storage capacity.

Centrifuges

SCI-24

High Speed Micro Centrifuge

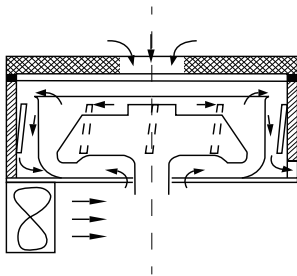


Brushless DC motor



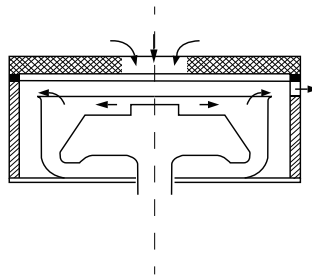
Wide range of rotors

Effective Ventilation System



Proprietary design of dual path ventilation enforcing air cooling from both the upper and lower side for the rotor.

Conventional design



Limited ventilation on the upper side of the rotor

Features

- Patent special double cooling air design ensures fast cooling of the rotor and low energy consumption
- 3-layer sealed rotors ensure safe centrifugation
- Brushless motor drive, maintenance free
- Safety features include door interlock; excessive speed and temperature detection; automatic self-diagnostics
- Outstanding aluminum alloy rotors fully autoclavable at 121°C temperature and high pressure disinfection
- Five rotors are optional complete with 24 places 1.5/2.0mL tubes, 5.0mL, 0.2mL and 0.5mL tubes with adapters

Applications

Suitable for numerous biological, chemistry, clinical and research applications including molecular biology, clinical chemistry labs, wide variety of microbiology applications, such as DNA, RNA or protein isolation and many more.

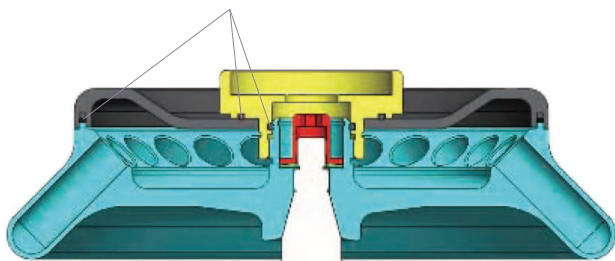


SCIOLOGEX rotors are manufactured from military-industrial grade aluminum alloy with high mechanical strength for precise running and safety (excludes SCI-12 rotor)

- Every rotor can reach a maximum Speed of 15000rpm
- Rotors are seated on a tapered shaft, concentric and self-aligning, perfect to achieve running stability at high speeds
- SCI-24 & SCI-1524R have sealed rotors and anti-sample overflow prevents accidental leakage

Seals within the aluminum alloy rotor

Three rubber seals fitted to achieve bio-safe condition



Rotor Features

Fully autoclavable

High strength aluminum alloy rotors are fully autoclavable, withstanding steam sterilizing at 121°C for 20 minutes

Three-layer seal

SCI-24 & SCI-1524R rotors are designed to prevent sample leakage. Each and every rotor is hermetically sealed by three rubber seals.

Mechanical safety

SCIOLOGEX centrifuges confirm to MCA standard IEC/EN61010-2-20, causing disruption by partially cutting and overloading rotor assembly, and guarantees that no part shall be detached to cause danger to person or the environment.



Specifications	SCI-24
Max. Speed	15000rpm(200-15000rpm), increment:10rpm
Max. RCF	21380 × g, increment:10 × g
Speed Accuracy	± 20 rpm
Rotor Capacity	5mL × 18, 5mL culture tubex12 0.2mL/0.5mL/1.5mL/ 2mL × 24, 0.5mL × 36,PCR8 × 4
Run Time	30sec-99min/Continuous
Acceleration/Braking time [Sec]	25s ↑ 25s ↓
Motor	Brushless DC motor
Safety Devices	Dual door interlock, Over-speed detection, Automatic internal diagnosis
Power	Single-phase, AC200V-400V, 50Hz/60Hz, 5A, AC100V-120V, 50Hz/60Hz, 8A 200W
Noise Level	≦ 64dB
Dimension[W × D × H]	280 × 364 × 266mm
Weight	12kg
Certification	CE cTUVus FCC MCA
Other functions	Speed/RCF switch; Short-time run function; sound-alert function

Available rotors

AS24-2

Cat. No.19400069

comes standard SCI-24 & SCI-1524R

Max. speed: 15000rpm

Max. RCF: 21380 × g

Rotor capacity:

2mL/1.5mL × 24/0.2mL × 24/0.5mL × 24

Rotor material: Aluminum alloy (Bio sealing)



Available rotor adapters: A02P2, A05P2

AS18-5
(round bottom)

Cat. No.19400073

optional SCI-24 & SCI-1524R

Max. speed :15000rpm

Max. RCF:21380 × g

Rotor capacity:5mL × 18 (Round bottom)

Rotor material:Aluminum alloy
(Bio sealing)



AS12-5V
(cone bottom)

Cat. No.19400070

optional SCI-24 & SCI-1524R

Max. speed: 15000rpm

Max. RCF: 21380 × g

Rotor capacity: 5mL × 12(Cone bottom)

Rotor material: Aluminum alloy
(Bio sealing): Yes



Optional adapters

A02P2

Cat. No.19500001

0.2mL rotor adapter

Used with A12-2, A12-2P, AS24-2 and A24-2P rotors 24pcs/pk



AS36-05

Cat. No.19400071

optional SCI-24 & SCI-1524R

Max. speed: 15000rpm

Max. RCF: 21380 × g

Rotor capacity: 0.5mL × 36, 0.2mL × 36

Rotor material: Aluminum alloy

Bio-safe(Bio sealing): Yes

Available rotor adapters: A02P05



A05P2

Cat. No.19500002

0.5mL rotor adapter

Used with A12-2, A12-2P, AS24-2 and A24-2P rotors 24pcs/pk



AS4-PCR8

Cat. No.19400072

optional SCI-24 & SCI-1524R

Max. speed: 15000rpm

Max. RCF: 21380 × g

Rotor capacity:0.2mL/PCR8 × 4

Rotor material: Aluminum alloy

Bio-safe(Bio sealing): Yes



A02P05

Cat. No.19500003

0.2mL rotor adapter

Used with AS36-05 rotor 36pcs/pk



Hematocrit Centrifuges

SCIOGEX hematocrit centrifuge with AC24P hematocrit rotor is used for determination of volume fractions of erythrocytes in blood for diagnostic purposes and doping tests. Also it is used for the photometric determination of bilirubin content in neonate blood samples. Hematocrit centrifuge with A24-2P tube rotor, can be used for extraction of DNA and RNA.



SCI24-H Hematocrit Centrifuge

Features:

- Speed range of 200-14000rpm, max. RCF 18620×g
- Precise control of speed and time separately
- Easy operation with intuitive menu and easy-to-read display
- Maintenance-free brushless DC motors
- Pulse operation for quick spins
- Rotor capacity: Hematocrit rotor:
- Hematocrit rotor: 24 capillary max. speed: 12000rpm
- Tube rotor: 1.5/2mL×24 max. speed: 14000rpm



SCI24-EH Economical Hematocrit Centrifuge

Features:

- Max. speed is 12000rpm, max. RCF 13680×g
- Precise control of speed and time separately
- Rotor capacity: Hematocrit rotor: 24 capillary

Specifications

	SCI24-H	SCI24-EH
Speed Range	200-14000rpm, increment: 10rpm	500-12000rpm, increment: 100rpm
Max. RCF	18620×g	13680×g
Speed Accuracy	±20	±100
Rotor Capacity	24 capilleries	24 capilleries
Run Time	30sec-99min/Continuous	10sec-99min/Continuous
Motor	Brushless DC motor	Brushless DC motor
Display	LCD	LCD
Safety Devices	Door interlock, Overspeed detector; Automatic internal diagnosis, Automatic rotor identification	Door interlock, Imbalance protection
Acceleration/Braking time	30s ↑ 30s ↓	40s ↑ 40s ↓
Power	Single-phase, 200V-240V, 50Hz/60Hz, 5A; 100V-120V, 50Hz/60Hz, 5A 160W	Single-phase, 200V-240V, 50Hz/60Hz, 5A; 380W
Dimension[WxDxH]	280×364×274mm	280×364×213mm
Weight	10kg	10kg
Certification	CE cTUVus FCC MCA IVD	-
Advanced features	Speed/RCF switch; Short-time run function; sound-alert function	Speed/RCF switch; Short-time run function; sound-alert function

SCI24-H/SCI24-EH | Rotors and Adapters

Available rotors



Cat. No. 19400013

A24- 2P

SCI24-H

Max. speed: 14000rpm

Max. RCF: 18620×g

Rotor capacity: 2mL/1.5mL×24,0.2mL×24,0.5mL×24

Rotor material: High strength plastic

Available rotor adapters: A02P2,A05P2,A10P15 & Mat



Cat. No. 19400047

AC24

SCI24-H & SCI24-EH

Max. speed: 12000rpm

Max. RCF: 13680×g

Rotor capacity: capillary tubes x24

Rotor material: High strength aluminum

Available adapters



Cat. No. 19500001

A02P2

2mL to 0.2mL rotor adapter, used with A12-2, A12-2P, AS24-2 and A24-2P rotors, 24pcs/pk



Cat. No. 19500002

A05P2

2mL to 0.5mL rotor adapter, used with A12-2, A12-2P, AS24-2 and A24-2P rotors, 24pcs/pk



Cat. No. 19500003

A02P05

Rotor adapter, used with A12-10P, 12pcs/pk

Clinical Centrifuges

SCI412

Low Speed Centrifuge

Features

- Easy operation with intuitive menu and easy-to-read display
- Speed can be set in RPM/RCF
- Maintenance-free brushless DC motor
- Quick spin function with press and hold pulse key
- Lid with electric lock and automatic release function
- Automatic lid-lock release after running
- Braking time 2 steps adjustable only for A6-50P rotor
- High strength plastic rotor gives excellent balance to guarantee stable working
- Dual protection housing particularly benefit for safe running
- Gentle braking at low speeds with efficient separation
- CE marked, cTUVus, and passed explosion-proof test



Applications

The SCI412 is ideal for separation of whole blood components, such as serum, plasma, buffy coat, red blood cells, as well as other bodily fluids.




Specifications	SCI412
Speed Range	300-4500rpm, increment: 100rpm
Max. RCF	2490 × g
Speed accuracy	± 20rpm
Rotor type	A12-10P, A6-50P
Run Time	30sec-99min HOLD (Continuous operation)
Motor	Brushless DC motor
Display	LCD
Safety Devices	Door interlock, Overspeed detector; Automatic internal diagnosis
Acceleration/Braking time	A12-10P: 20s ↑ 13s ↓ A6-50P: 20s ↑ 20 s /90 s ↓
Power	Single-phase, 100V-240V, 50Hz/60Hz, 3A70W
Dimension[WxDxH]	354 × 304 × 215mm
Weight	6kg
Certification	CE cTUVus
Advanced features	Speed/RCF switch; Short-time run function; sound-alert function

Rotors

A12-10P (round bottom)	Cat. No.19200348	A6-50P (round bottom)	Cat. No.19100197
<p>comes standard SCI412 Max. speed: 4500rpm Max. RCF: 2490 × g Rotor capacity: 8x15mL, 12x10mL Rotor material: High strength plastic</p>		<p>optional SCI412 Max. speed: 4000rpm Max. RCF: 1800 × g Rotor capacity: 50mL × 6 or 15mL × 6 Rotor material: High strength plastic</p>	

A12-10P and A6-50P are not interchangeable

Available tubes	Tube quantity	Dimension (ØLxmm)	Adapters	Maximum speed(rpm)	Radius (cm)	Maximum RCF(×g)
15mL con 	8	17 × 120		4500	11	2490
1.5–5mL vacu 	12	13 × 75	A10P15 & Plug 	4500	9.8	2218
4–7mL vacu 	12	13 × 100	A10P15 	4500	11	2490
		16 × 75			9.8	2218
8.5–10mL vacu 	12	16 × 107		4500	11	2490
2.7–3mL(EU) collection tube 	12	11 × 66	A10P15 & Plug 	4500	9.8	2218
7.5–8.2mL(EU) collection tube 	12	15 × 92	A10P15 	4500	11	2490

The SCIOLOGEX SCI506 low-speed centrifuge is supplied with a fixed angle rotor which can hold up to 6 x 15mL/10mL/7mL/5mL tubes (adapters included). It is widely used for blood or urine separation in medical routine practice in hospitals, clinics or research institutes.

SCI506 Low-speed Centrifuge



Features

- Speed range 300-5000rpm
- Rotor speed can be set and displayed in RPM or G-force
- Two memory programs
- Two deceleration speeds setting to meet different requirements
- Easy-to-read display
- Automatic lid-lock release
- Maintenance-free brushless DC motor



Specifications

SCI506

Speed Range	300-5000rpm, increment:10rpm
Max. RCF	2350xg, increment: 10g
Speed accuracy	±20rpm
Rotor capacity	6x15mL/10mL/7mL/1.5-5ml
Run Time	30sec-99min, HD(continuous running)
Display	LCD
Programs Memory	2
Acceleration/Deceleration	1 ↑ 2 ↓
Safety Devices	Door interlock, Overspeed detector, Automatic internal diagnosis
Motor	Brushless DC motor
Power	Single-phase, 100V-240V,50Hz/60Hz, 70W
Dimension(WxDxH)	300X240X180mm
Weight	11lbs

Advanced features

Speed/RCF switch; sound-alert function



Included adapters



A5P17 Cat. No.19500022

5ml adapter, for 13 x 75mm blood collection tubes



A2P17

Cat. No.19500023

1.5/2.0ml Cryogenic Vials/ centrifuge tube adapter

Multi-Purpose Low Speed Centrifuge

SCI636

SCIOLOGEX **SCI636** Multi-Purpose Low-speed Centrifuge is ideal for the centrifugation of samples in clinical chemistry, cytology, research laboratories, industrial laboratories, etc. This centrifuge is suitable for tubes with caps, blood collection or urine tubes. Swing-out bucket rotors and adapters can be compatible with standard tubes up to 100mL at low speed.

SCI636 Multi-Purpose Low-speed Centrifuge

Features

- Speed can be set from 300- 6000rpm
- Maximum capacity of the centrifuge: 100 mLx4
- 9 Acceleration/10 Brake speed settings to ensure optimal separation
- A wide range of accessories(fixed angle and swing-out bucket rotors)
- Automatic rotor identification
- Timers can be set up to 99 min. for short run/ continuous run
- 9 procedures stored in memory makes the operation much simplified
- Maintenance-free brushless DC motors



Specifications

Speed range
Max. RCF
Speed accuracy
Max. Capacity
Run Time
Motor
Display
Program Memory
Safety Devices
Acceleration/Deceleration time
Power
Dimension[WxDxH]
Weight
Certification
Advanced features

SCI636
300-6000rpm increment: 10rpm
4300xg
±20rpm
100mLx4
30sec-99mins/continuous
Brushless DC
LCD
9
Door Imbalance protection Over speed & Over temperature detection
9 ↑ / 10 ↓
660W; Single-phase AC220V-240V, 50Hz/60Hz, 6.3A; AC110V-120V, 50Hz/60Hz, 10A
445x579x269mm
36kg
CE cTUVus FCC IVD
speed/rcf switch; Rotor identification

SCI636 Rotor Options

Cat. No.19400041

comes standard SCI636

Max. speed: 4000rpm

Max. RCF: 2950 × g

Rotor material: stainless steel body and adapter



	 19400045		 19400044			 19400043		 19400042			
bucket	x 4										
tube	x 36		x 16			x 8	x 4	x 4	x 4	x 4	x 20
Nominal volume	3–7mL		10mL	12mL	15mL	50mL	100mL	85mL	50mL	15mL	3–7mL
φ × L mm	13x75	13x100	16x100	17x105	17x120	29.5x100	38x108	38x104	29.5x100	17x120 13x100 13x75	13x100 13x75
tube											
adapter	with plug					 A50V	 A100P80		 A100P50  A50V	 A100P15	 A100P10
Package	36					8	4		4	8	4
Tubes per rotor	36	36	16	16	16	8	4	4	4	8	20
Radius(cm)	14	16.5	15.9	15.9	15.9	15.9	15.9	15.9	15.9	15.1	14.7
Max RCF (g-force)	2500	2950	2840	2840	2840	2840	2840	2840	2840	2700	2630

SCI636 Rotor Options

S2-MP

Cat. No.19400062

DM0636

Max. speed: 4000rpm
 Max. RCF: 2200 × g
 Rotor capacity: Micro-plates
 384-PCR/96-PCR/Elisa
 plates × 8pcs; Deep well plates × 4pcs
 Rotor material: stainless steel body



AS6-50V (cone bottom)

Cat. No.19400038

DM0636

Max. speed: 6000rpm
 Max. RCF: 4020 × g
 Rotor capacity: 50mL × 6 or 15mL × 6
 Rotor material: aluminum
 Biosealing: Yes



AS12-PCR8

Cat. No.19400036

DM0636

Max. speed: 6000rpm
 Max. RCF: 4020 × g
 Rotor capacity: PCR 8 trips × 12
 Rotor material: aluminum
 Biosealing: Yes



AS18-5V (cone bottom)

Cat. No.19400035

DM0636

Max. speed: 6000rpm
 Max. RCF: 4020 × g
 Rotor capacity: 5mL × 18
 Rotor material: stainless steel body
 and aluminum buckets
 Biosealing: Yes



AS30-2

Cat. No.19400034

DM0636

Max. speed: 6000rpm
 Max. RCF: 4020 × g
 Rotor capacity: 2mL × 30
 Rotor material: aluminum
 Biosealing: Yes



A8-50 (round bottom)

Cat. No.19400039

DM0636

Max. speed: 5000rpm
 Max. RCF: 3960xg
 Rotor capacity: 50mL × 8 or
 15mLx16
 Rotor material: aluminum body
 and stainless steel adapter
 Default adapters: SE100P31x8,SE100P17x6



AS60-2

Cat. No.19400037

DM0636

Max. speed: 6000rpm
 Max. RCF: 4020 × g
 Rotor capacity: 2mL × 60
 Rotor material: aluminum
 Biosealing: Yes



A30-15 (round bottom)

Cat. No.19400040

DM0636

Max. speed: 4500rpm
 Max. RCF: 3210xg
 Rotor capacity: 15mL × 30
 Rotor material: aluminum body and
 stainless steel
 adapter Bio-safe(Biosealing): Yes

