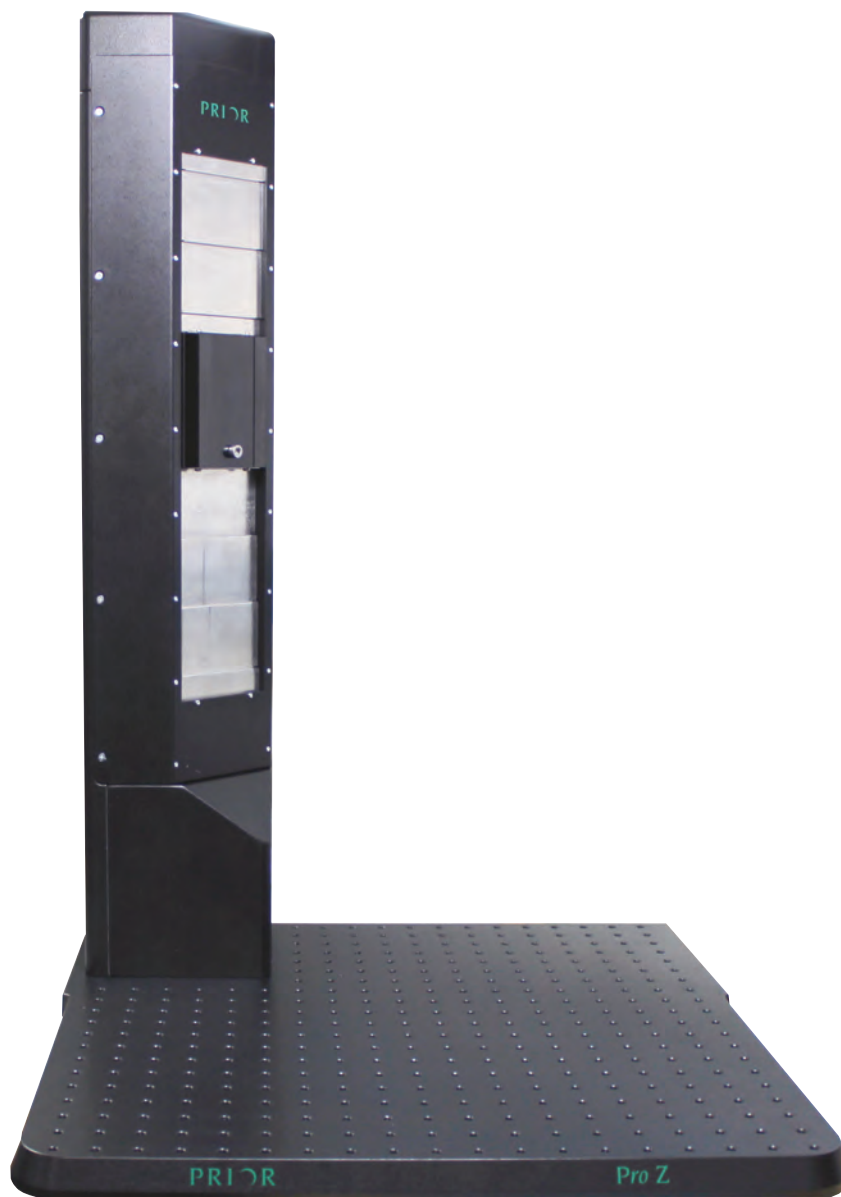
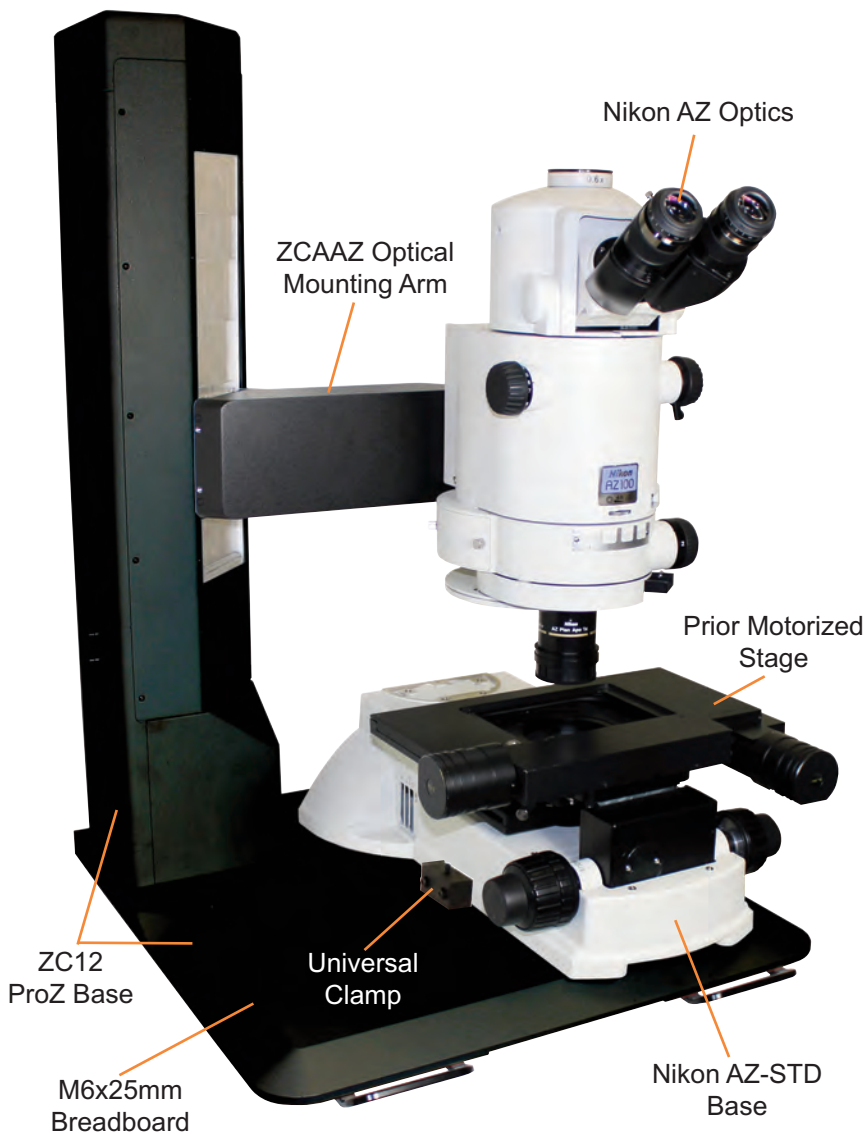


ProZ Motorized Focus Columns

Motorized Stand for Nikon AZ100/LV100 and
C`ma di g6 L L' #AJL!%\$ Modular Microscope Components



ProZ Motorized Focus Column For Nikon AZ100 Modular Microscope Components



The Prior Scientific ProZ motorized focus column for the Nikon AZ100 modular microscope components offers a wide range of configurations to meet your Z focus and XY stage microscopy needs. The ProZ motorized focus column with 10" of focus travel provides a large (508mm square) stable platform for Z only imaging or combine with the H101XY stage system kit from Prior Scientific for the ultimate in XY and Z performance. An Episcopic stand is available from Prior which is compatible with both the Prior H101 motorized stage and the Nikon AZ-STGE EPI stage. For Diascopic applications, the ProZ is compatible with the Nikon AZ-STD Diascopic stand (must remove upper focus mount and pillars). ProZ components are also available for the Nikon LV100 and SMZ1500 microscopes.

Notes:

- A variety of LED and metal halide illumination options are available from Prior. Please call for details.
- The ProZ Motorized Focus Column is compatible with up to 300mm x 300mm stages. Please call for details.

General Specifications:

- Z travel range of 10"
- Minimum resolution of 0.25 microns, encoded
- Stepper motor is 4 phase, 1.5 amp/phase (ProScan)
- Compatible with ProScan III and ES10ZE controllers
- Compatible with Lumen, Lumen 200S and Lumen PRO fluorescence illuminators (Nikon fluorescence attachment required)
- Compatible with AZ-STD (Koehler base)
- Base is 508mm x 508mm
- Weight of 45 kg, not including stage, lamphouse or optical body
- Power input – 100-240 VAC, 50-60 Hz
- Communications – RS232 or USB via ProScan III or ES10ZE controller
- Drivers available for most imaging software packages

ProZ Motorized Focus Column

For Nikon AZ100 Modular Microscope Components

ProZ Motorized Focus Column/Optical Arm Mounting Adapter

Part Number	Description
ZC12	Motorized ProZ Stand with 20" base and 10" of travel. Compatible with Nikon AZ100, LV100, SMZ1500 modular microscope components
ZCAAZ	ProZ optical mounting arm for AZ100

Prior ProZ Stage Stands for Nikon AZ100 Modular Optical Components and Universal Mounting Clamp Kit

Part Number	Description
ZCBAZRL	Stage mount reflected light only for Z column. For Prior motorized stage only and Nikon AZ -STGE EPI stage. Includes Nikon AZ/50i dovetail.
ZCBCK	Universal clamp kit for customer supplied Nikon AZ-STD base.

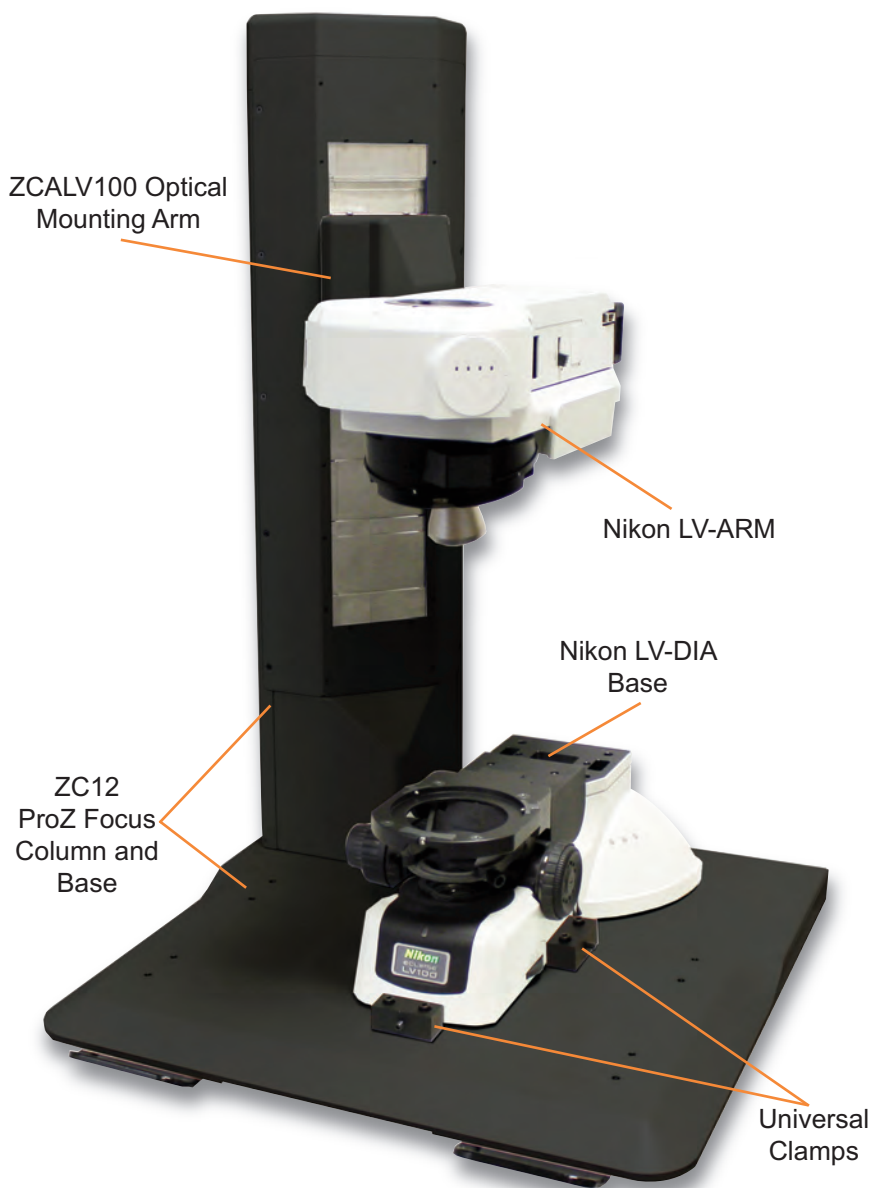
Compatible Nikon AZ100 Components (Call Prior for more information on other compatible Nikon AZ100 components.)

Part Number	Description
AZ-STD (Base)	Base for Nikon AZ100
AZ-SMZ	Focusing mount adapter
AZ-STGE	Manual Epi stage

Prior Scientific Product Compatibility (Controller required.)

Part Number	Description	
CONTROLLERS	H31XYZE	ProScan III controller with X, Y, Z drives and encoder input
	H31XYZEF	ProScan III controller with X, Y, Z drives, 3 filter wheel drives, 3 shutter drives and encoder input
	ES10ZE	OptiScan II focus only controller
FLUORESCENCE	L2002M	Lumen 200 fluorescence illumination system with manual light attenuator
	L200S2M	Lumen 200S fluorescence illumination system with manual light attenuator and extended UV and IR output
	L200PRO2M	Lumen 200PRO fluorescence illumination system with integral automated light attenuator and high speed filter wheel

ProZ Motorized Focus Column For Nikon LV Modular Microscope Components



The Prior Scientific ProZ Motorized Focus Column for the Nikon LV range of modular microscope components offers many configurations to meet your Z focus and XY stage microscopy needs. Compatible with to the Nikon LV-ARM basic arm assembly, the ProZ Motorized Focus Column with 10" of focus travel provides a large (508mm square) stable platform for Z only imaging or combine with the H101XY stage system kit from Prior Scientific for the ultimate in XY and Z performance. The ProZ Motorized Focus Column can be supplied with the Prior ZCBBXRL base for reflected light only applications or combined with the Nikon LV-DIA base for applications requiring transmitted diascopic illumination. ProZ components are also available for the Nikon AZ100 and SMZ1500 microscopes.

Notes:

- A variety of LED and metal halide illumination options are available from Prior. Please call for details.
- The ProZ Motorized Focus Column is compatible with up to 300mm x 300mm stages. Please call for details.

General Specifications:

- Z travel range of 10"
- Minimum resolution of 0.25 microns, encoded
- Stepper motor is 4 phase, 1.5 amp/phase (ProScan)
- Compatible with ProScan III and ES10ZE controllers
- Compatible with Lumen, Lumen 200S and Lumen PRO fluorescence illuminators (Nikon fluorescence attachment required)

- Compatible with Prior Brightfield LED
- Base is 508mm x 508mm
- Weight of 45 kg, not including stage, lamphouse or optical body
- Power input – 100-240 VAC, 50-60 Hz
- Communications – RS232 or USB via ProScan III or ES10ZE controller
- Drivers available for most imaging software packages

ProZ Motorized Focus Column

For Nikon LV Modular Microscope Components

ProZ Motorized Focus Column/Optical Arm Mounting Adapter

Part Number	Description
ZC12	Motorized ProZ Stand with 20" base and 10" of travel. Compatible with Nikon AZ100, LV100, SMZ1500 modular microscope components
ZCALV100	ProZ optical mounting arm compatible with LV-ARM basic arm

Prior ProZ Stage Stands for Nikon LV Modular Optical Components and Universal Mounting Clamps

Part Number	Description
ZCBBXRL	Stage mount reflected light only for Z column. For Prior motorized stage only. Please call for manual stage.
ZCBCK	Universal clamp kit for customer supplied Nikon LV-DIA base

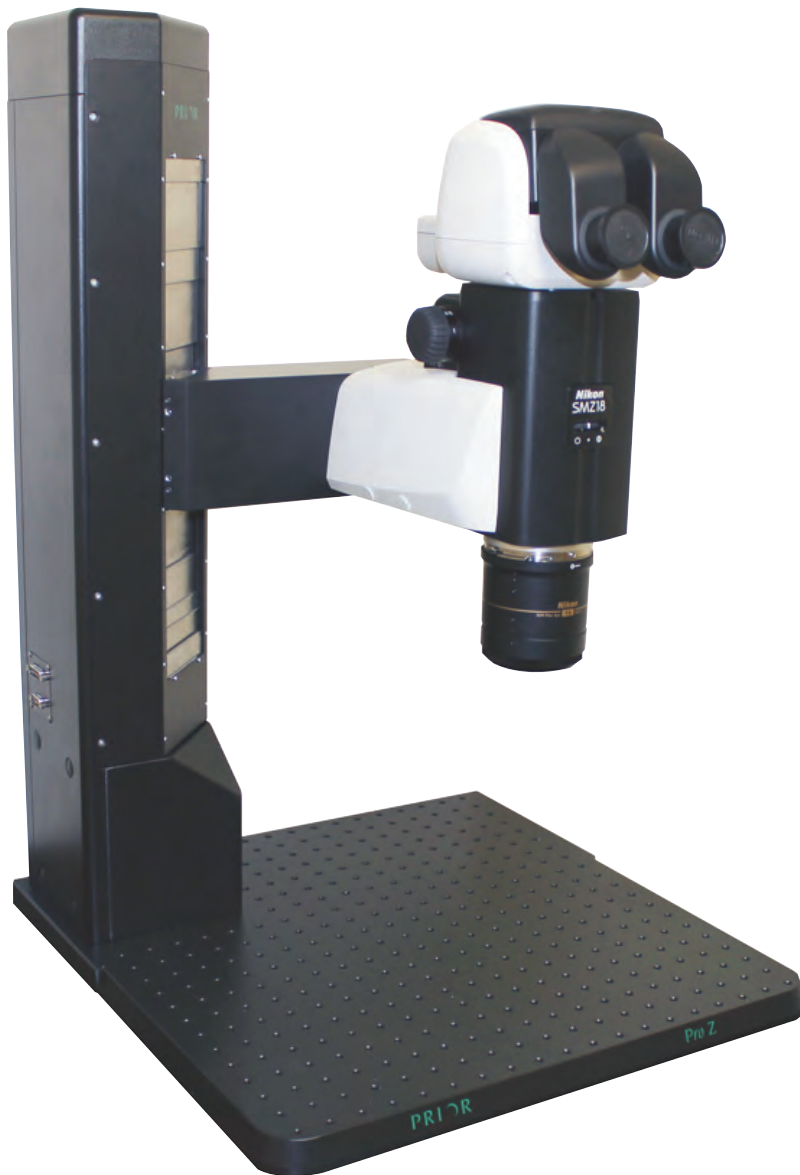
Compatible Nikon LV Components (Call Prior for more information on other compatible Nikon LV components.)

Part Number	Description
LV-DIA (Base)	Base for diascopic illumination
LV-ARM (Optical Arm)	Basic arm for mounting to episcopic illuminators and nosepiece

Prior Scientific Product Compatibility (Controller required.)

Part Number	Description	
CONTROLLERS	H31ZFE	ProScan III controller with 3 stepper drives, for Z focus and 2 filter wheels or 3 filter wheels, includes 3 shutter drives and encoder input
	H31XYZE	ProScan III controller with X, Y, Z drives and encoder input
	H31XYZEF	ProScan III controller with X, Y, Z drives, 3 filter wheel drives, 3 shutter drives and encoder input
	ES10ZE	OptiScan II focus only controller
BRIGHTFIELD	LDB100	Brightfield LED system for use with Prior controller
	LDB101	Brightfield LED system for use with stand alone power supply
FLUORESCENCE	L200	Lumen 200 fluorescence illumination system with manual light attenuator
	L200S	Lumen 200S fluorescence illumination system with manual light attenuator and extended UV and IR output
	L200PRO	Lumen 200PRO fluorescence illumination system with integral automated light attenuator and high speed filter wheel

ProZ Motorized Focus Column For Nikon SMZ18/25 Stereoscopic Microscopes



The Prior Scientific ProZ motorized focus column for the Nikon SMZ18/25 stereoscopic microscope components offers a wide range of configurations to meet your Z focus and XY stage microscopy needs. Mounting directly to the zoom body of the Nikon SMZ18/25, the ProZ focus column with 10" of focus travel provides a large (508mm square) stable platform for Z only imaging or combine with the H101XY stage system kit from Prior Scientific for the ultimate in XY and Z performance. Stage mount options are available including a basic reflected light stand and a brightfield transillumination module. The brightfield module includes the Prior brightfield LED illumination system*. ProZ components are also available for the Nikon AZ100 and LV100 microscopes.

*A variety of LED and metal halide illumination options are available from Prior. Please call for details.

Note: The ProZ Motorized Focus Column is compatible with up to 300mm x 300mm stages. Please call for details.

General Specifications:

- Z travel range of 10"
- Minimum resolution of 0.25 microns, encoded
- Stepper motor is 2 phase, 1.5 amp/phase (ProScan)
- Compatible with ProScan and OptiScan controllers
- Compatible with Lumen, Lumen 200S and Lumen PRO fluorescence illuminators (Nikon fluorescence attachment required)
- Compatible with Prior Brightfield LED (Brightfield stage mount required)
- Base is 508mm x 508mm
- Weight of 45 kg not including stage, lamphouse or optical body
- Power input – 100-240 VAC, 50-60 Hz
- Communications – RS232 or USB via ProScan or OptiScan controller
- Drivers available for most imaging software packages

ProZ Motorized Focus Column

For Nikon SMZ18/25 Stereoscopic Microscopes

ProZ Motorized Focus Column

Part Number	Description
ZC12	Motorized ProZ Stand with 20" base and 10" of travel. Compatible with Nikon AZ100, LV100, SMZ18/25 modular microscope components

ProZ Motorized Focus Column Adapters for Nikon Microscopes

Part Number	Description
ZCAAZ100	AZ100 optical mounting arm
ZCALV100	LV100 optical mounting arm
ZCASMZ25	SMZ18/25 optical mounting arm

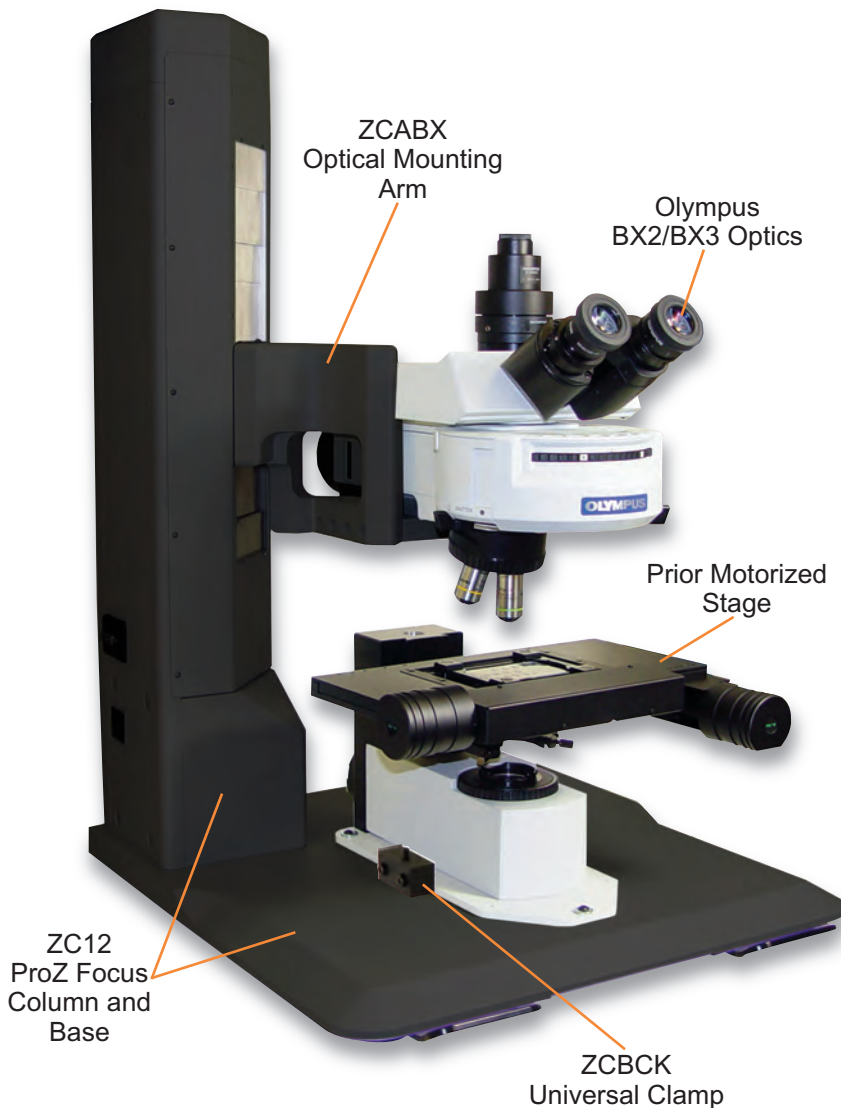
ProZ Motorized Stage Stands

Part Number	Description
ZCBRL	Reflected light stage mount for H101, H105
HP1973	Ni dovetail rotating mount for ZCBRL, ZCBTL
ZCBTL	Transmitted light stage mount for H101 or H105. Includes LDB101 LED light source.

Prior Scientific Product Compatibility (Controller required.)

Part Number	Description	
CONTROLLERS	H31ZFE	ProScan III controller with 3 stepper drives, for Z focus and 2 filter wheels or 3 filter wheels, includes 3 shutter drives and encoder input
	H31XYZE	ProScan III controller with X, Y, Z drives and encoder input
	H31XYZEF	ProScan III controller with X, Y, Z drives, 3 filter wheel drives, 3 shutter drives and encoder input
	ES10ZE	OptiScan II focus only controller
BRIGHTFIELD	LDB100	Brightfield LED system for use with Prior controller
	LDB101	Brightfield LED system for use with stand alone power supply
FLUORESCENCE	L200	Lumen 200 fluorescence illumination system with manual light attenuator
	L200S	Lumen 200S fluorescence illumination system with manual light attenuator and extended UV and IR output
	L200PRO	Lumen 200PRO fluorescence illumination system with integral automated light attenuator and high speed filter wheel

ProZ Motorized Focus Column For Olympus BX2/BX3 Modular Microscope Components



The Prior Scientific ProZ Motorized Focus Column for the Olympus BX2/BX3 modular microscope components offers a wide range of configurations to meet your Z focus and XY stage microscopy needs. Mounting directly to the BX2/BX3 illuminator assembly, the ProZ Motorized Focus Column with 10" of focus travel provides a large (508mm square) stable platform for Z only imaging or combine with the BXPROXY/BX3PROXY stage system kit from Prior Scientific for the ultimate in XY and Z performance. Two different stage mount options are available from Prior, including a basic reflected light stand and a full Koehler illumination module. The Koehler module is compatible with the Prior Brightfield LED illumination system. For other transmitted light applications, both the Olympus SZX2-ILLD and SZX2-ILLB bases are compatible with the Prior ProZ Motorized Focus Column for brightfield/darkfield applications. Prior ProZ Motorized Focus Column components are also available for the Olympus MVX-10 and SZX16* microscopes.

* Non-fluorescence SZX16 only.

Notes:

- A variety of LED and metal halide illumination options are available from Prior. Please call for details.
- The ProZ Motorized Focus Column is compatible with up to 300mm x 300mm stages. Please call for details.

General Specifications:

- Z travel range of 10"
- Minimum resolution of 0.25 microns, encoded
- Stepper motor is 4 phase, 1.5 amp/phase (ProScan)
- Compatible with ProScan III and ES10ZE controllers
- Compatible with Lumen, Lumen 200S and Lumen PRO fluorescence illuminators (on MVX-10 or BX2/BX3 fluorescence attachments)
- Compatible with Prior Brightfield LED (Koehler base)

- Base is 508mm x 508mm
- Weight of 45 kg, not including stage, lamphouse or optical body
- Power input – 100-240 VAC, 50-60 Hz
- Communications – RS232 or USB via ProScan III or ES10ZE controller
- Drivers available for most imaging software packages

ProZ Motorized Focus Column

For Olympus BX2/BX3 Modular Microscope Components

ProZ Motorized Focus Column/Optical Arm Mounting Adapter

Part Number	Description
ZC12	Motorized ProZ Stand with 20" base and 10" of travel. Compatible with Olympus MVX-10, SZX16* zoom body and BX2/BX3 RFA illuminator modular microscope components
ZCABX	BX2/BX3 optical mounting arm for RFA illuminator

Prior ProZ Stage Stands for Olympus BX2/BX3 Modular Optical Components and Universal Mounting Clamps

Part Number	Description
ZCBKOE	Koehler illumination module for ProZ Stand. Includes condenser mount and BX dovetail stage mount.
ZCBBXRL	Stage mount reflected light only for Z column for Prior motorized stage only. Please call for manual stage.
ZCBCK	Universal clamp kit for customer supplied Olympus BX2/BX3 base

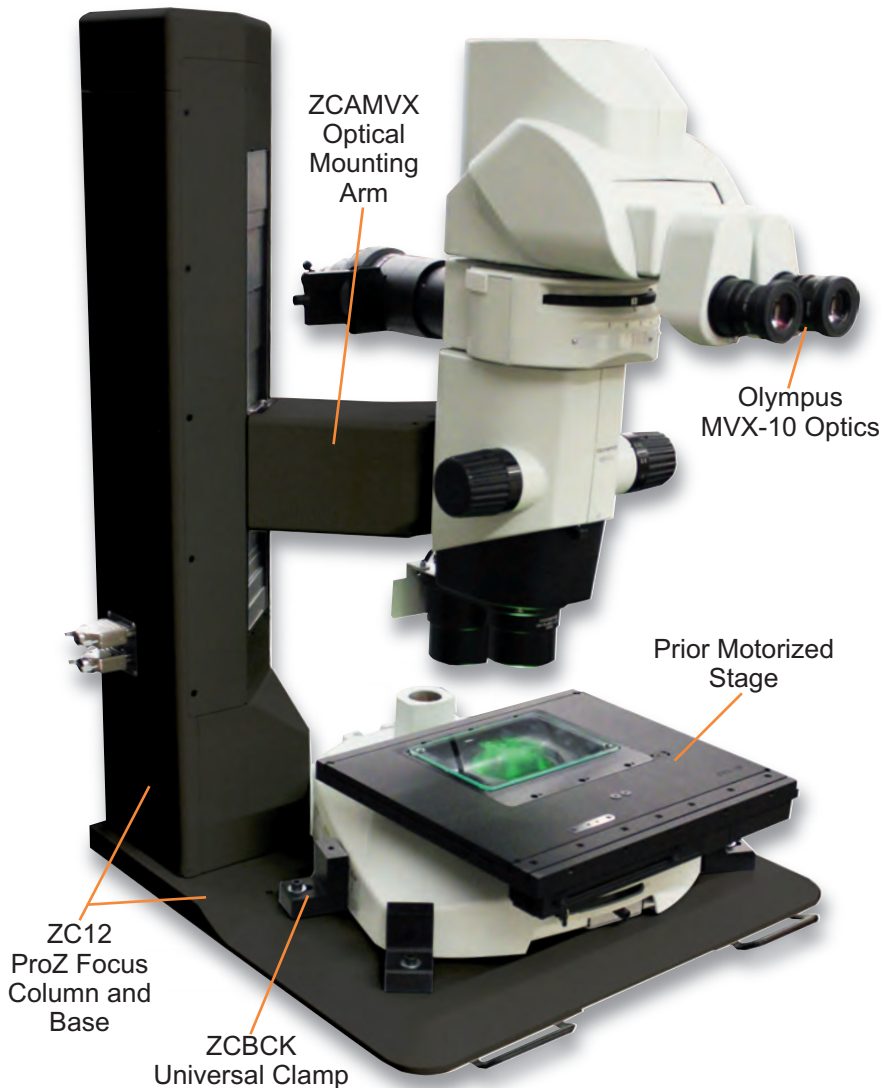
Compatible Olympus BX2/BX3 Components (Call Prior for more information on other compatible Olympus BX2/BX3 components.)

Part Number	Description
SZX2-ILLD/ILLB	Transmitted base - requires dovetail S-X125
S-X125	BX stage mount dovetail
BX3-URA	BX3 universal reflected illuminator
BX3-RFAS	BX3 coded fluorescence illuminator
BX-RFA	BX fluorescence illuminator
BX-URA2	BX reflected light illuminator

Prior Scientific Product Compatibility (Controller required.)

Part Number	Description	
CONTROLLERS	H31ZFE	ProScan III controller with 3 stepper drives, for Z focus and 2 filter wheels or 3 filter wheels, includes 3 shutter drives and encoder input
	H31XYZE	ProScan III controller with X, Y, Z drives and encoder input
	H31XYZEF	ProScan III controller with X, Y, Z drives, 3 filter wheel drives, 3 shutter drives and encoder input
	ES10ZE	OptiScan II focus only controller
BRIGHTFIELD	LDB100OL	Brightfield LED system for use with Prior controller
	LDB101OL	Brightfield LED system for use with stand alone power supply
FLUORESCENCE	L200OL	Lumen 200 fluorescence illumination system with manual light attenuator
	L200SOL	Lumen 200S fluorescence illumination system with manual light attenuator and extended UV and IR output
	L200PROOL	Lumen 200PRO fluorescence illumination system with integral automated light attenuator and high speed filter wheel

ProZ Motorized Focus Column For Olympus MVX-10 Modular Microscope Components



The Prior Scientific ProZ Motorized Focus Column for the Olympus MVX-10 modular microscope components offers a wide range of configurations to meet your Z focus and XY stage microscopy needs. Mounting directly to the zoom body of the Olympus MVX-10, the ProZ Motorized Focus Column with 10" of focus travel provides a large (508mm square) stable platform for Z only imaging or combine with the BXPXY/BX3PXY stage system kit from Prior Scientific for the ultimate in XY and Z performance. Two different stage mount options are available from Prior, including a basic reflected light stand and a full Koehler illumination module. The Koehler module is compatible with the Prior Brightfield LED illumination system. For other transmitted light applications both the Olympus SZX2-ILLD and SZX2-ILLB bases are compatible with the Prior ProZ Motorized Focus Column for brightfield/darkfield applications. Prior ProZ Motorized Focus Column components are also available for the Olympus MVX-10 and SZX16* microscopes.

* Non-fluorescence SZX16 only.

Notes:

- A variety of LED and metal halide illumination options are available from Prior. Please call for details.
- The ProZ Motorized Focus Column is compatible with up to 300mm x 300mm stages. Please call for details.

General Specifications:

- Z travel range of 10"
- Minimum resolution of 0.25 microns, encoded
- Stepper motor is 4 phase, 1.5 amp/phase (ProScan)
- Compatible with ProScan III and ES10ZE controllers
- Compatible with Lumen, Lumen 200S and Lumen PRO fluorescence illuminators (on MVX-10 or BX2/BX3 fluorescence attachments)
- Compatible with Prior Brightfield LED (Koehler base)
- Base is 508mm x 508mm
- Weight of 45 kg, not including stage, lamphouse or optical body
- Power input – 100-240 VAC, 50-60 Hz
- Communications – RS232 or USB via ProScan III or ES10ZE controller
- Drivers available for most imaging software packages

ProZ Motorized Focus Column

For Olympus MVX-10 Modular Microscope Components

ProZ Motorized Focus Column/Optical Arm Mounting Adapter

Part Number	Description
ZC12	Motorized ProZ Focus Column with 20" base and 10" of travel. Compatible with Olympus MVX-10 modular microscope components
ZCAMVX	MVX-10 optical mounting arm

Prior ProZ Stage Stands for Olympus MVX-10 Modular Optical Components and Universal Mounting Clamps

Part Number	Description
ZCBKOE	Koehler illumination module for ProZ Stand. Includes condenser mount and BX dovetail stage mount.
ZCBBXRL	Stage mount reflected light only for Z column for Prior motorized stage only. Please call for manual stage.
ZCBCK	Universal clamp kit for customer supplied Olympus MVX-10 base

Compatible Olympus MVX-10 Components (Call Prior for more information on other compatible Olympus MVX-10 components.)

Part Number	Description
SZX2-ILLD/ILLB	Transmitted base - requires dovetail S-X125
S-X125	BX stage mount dovetail
MVX-ZB10	Zoom body

Prior Scientific Product Compatibility (Controller required.)

	Part Number	Description
CONTROLLERS	H31XYZE	ProScan III controller with X, Y, Z drives and encoder input
	H31XYZEF	ProScan III controller with X, Y, Z drives, 3 filter wheel drives, 3 shutter drives and encoder input
	ES10ZE	OptiScan II focus only controller
BRIGHTFIELD	LDB100OL	Brightfield LED system for use with Prior controller
	LDB101OL	Brightfield LED system for use with stand alone power supply
FLUORESCENCE	L200OL2	Lumen 200 fluorescence illumination system with manual light attenuator
	L200SOL2	Lumen 200S fluorescence illumination system with manual light attenuator and extended UV and IR output
	L200PROOL2	Lumen 200PRO fluorescence illumination system with integral automated light attenuator and high speed filter wheel