

Lightlines, 1", 2", & 3"

For narrower and elongated illumination for Microscopy and Machine Vision Inspection applications



2" Dual Lightline, A08583



One leg of Dual or Quad 3" (76) Lightline with Cylindrical Lens

Input: Black Anodized Aluminium
 Body: Black Anodized Aluminium
 Sheathing: PVC Covered Metal Tubing

Warning : This product is manufactured with glass fiber. Not for use in cable/hose carrier. Call SCHOTT to discuss moving cable/hose carrier applications.

Product and Performance Characteristics

Alternative to fiber optic bundles for narrower and elongated illumination for Microscopy and Machine Vision Inspection applications with higher uniformity than any LED chips can achieve due to position density

- Small, uniform fields of view
- Narrow body design and offset position of the line on 1" (25) and 2" (51) bodies allows close positioning for darkfield effect
- 3"(76)* models are calibrated with DDL-bulb to ± 8 gray scale levels at a mean of 200 with a gamma setting of 1.0 to deliver optimum uniformity (see chart)
- Uniformity of 1"(25) and 2"(51) lines is better than ± 8 gray scales (See reference section for more information on uniformity of fiber optic products)
- Rugged aluminum body and light source ferrule with black anodized finish, PVC covered metal tubing protects the fiber bundle
- Lightline holders and support products available
- Custom lengths, bundle exits, multiple combinations (dual, quad, etc.) and line widths can be designed for your unique requirements; Combine lightlines with other fiber optic components in a single input to create unique lighting effects
- Cylindrical and apertured lenses are available for most lightline models (Made-to-Order)

Matrix for A08588 & A08589 Lightlines

Dimensions in () are in mm

Part No.	A	B	C	D	E	F	G
A08588	1"(25)	.07"(1.8)	1.25"(31.8)	38"(965.2)	.16"(4.1)	1.1"(28)	2"(50.8)
A08589	2"(51)	.035"(.89)	2.25"(57.2)	38.5"(978)	.16"(4.1)	2.1"(53)	2.5"(63.5)

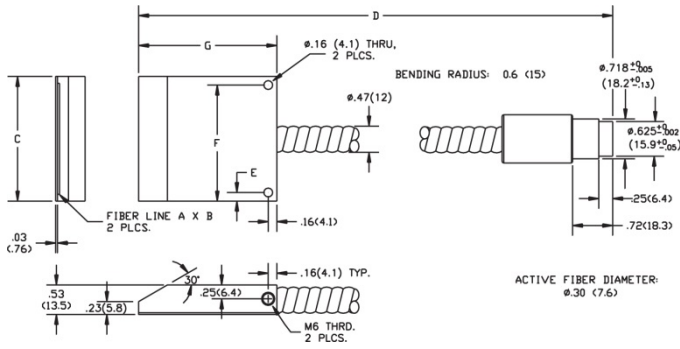
Matrix for A08579 & A08583 Lightlines

Part No.	A	B	C	D	E	F	G
A08579	1"(25)	.07" (1.8)	1.25"(31.8)	38"(965.2)	.16"(4.1)	1.1"(28)	2"(50.8)
A08583	2"(51)	.035"(.89)	2.25"(57.2)	38.5"(978)	.16"(4.1)	2.1"(53)	2.5"(63.5)

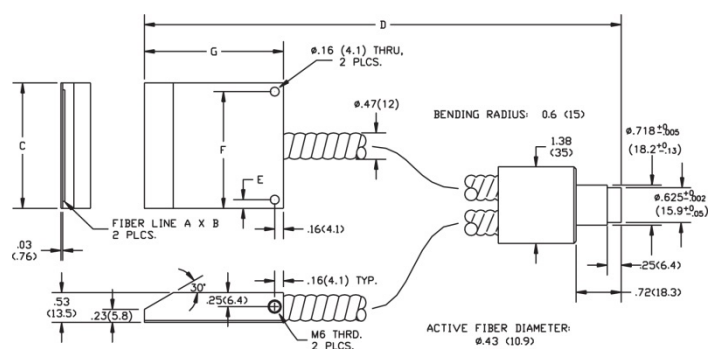
Version 01.2017



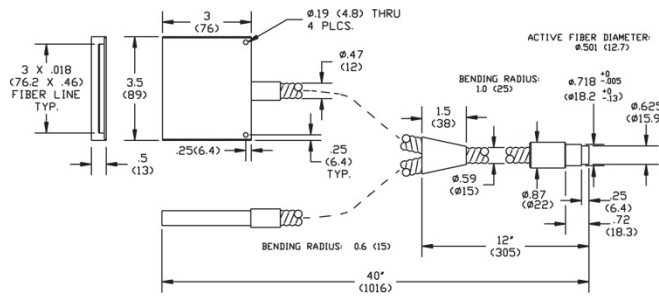
Single Lightlines A08588 & A08589



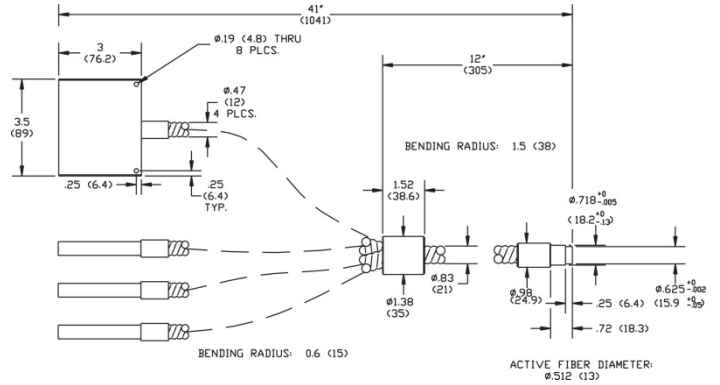
Dual Lightlines A08579 & A08583



Dual Lightline A08580



Quad Lightline A08584



Dimensions in () are in mm

Lightlines, 1", 2", & 3" and Lenses. Single Line Configuration with 36" Bundle Length

Part No.	Line Dimension Length x Width	Input Active Fiber Diameter	Gray Scale Uniformity [^]	Part No. for Lens	
				Cylindrical	Apertured
A08588	1" x .070" (25 x 1.8)*	.30" (7.6)	< ± 8	*A08571	Custom
A08589	2" x .035" (51 x .89)	.30" (7.6)	< ± 8	*A08572	Custom

[^] Gamma setting of 1.0 Dimensions in () are in mm. * Made-to-order products

Lightlines, 1", 2", & 3" and Lenses. Dual Line Configuration with 36" Bundle Length

Part No.	Line Dimension Length x Width	Input Active Fiber Diameter	Gray Scale Uniformity [^]	Part No. for Lens	
				Cylindrical	Apertured
A08579	1" x .070" (25 x 1.8)	.43" (10.9)	< ± 8	A08571	Custom
A08583	2" x .035" (51 x .89)	.43" (10.9)	< ± 8	A08572	Custom
A08580	3" x .018" (76 X .46)	.36" (9.1)	± 8	A08582	Custom

[^] Gamma setting of 1.0 Dimensions in () are in mm

Lightlines, 1", 2", & 3" and Lenses. Quad Line Configuration with 36" Bundle Length

Part No.	Line Dimension Length x Width	Input Active Fiber Diameter	Gray Scale Uniformity [^]	Part No. for Lens	
				Cylindrical	Apertured
A08584	3" x .018" (76 X .46)	.51" (13.0)	± 8	*A08582	Custom

[^] Gamma setting of 1.0 Dimensions in () are in mm. * Made-to-order products

Lighting and Imaging
SCHOTT North America, Inc.
 122 Charlton Street
 Southbridge, MA 01550
 USA

Phone: +1 (508) 765-9744
 Fax: +1 (508) 765-1299
 lightingimaging@us.schott.com
 www.us.schott.com/lightingimaging

SCHOTT
 glass made of ideas

All specifications are subject to change without prior notice. This datasheet or any extracts thereof may only be used in other publications with express permission of SCHOTT. © SCHOTT North America, Inc.