

OLYMPUS®

Your Vision, Our Future

DIGITAL CAMERA

DP25

5 million pixel resolution

HIGH PERFORMANCE 5-MEGAPIXEL COLOR CAMERA FOR YOUR DAILY LIGHT MICROSCOPY WORK

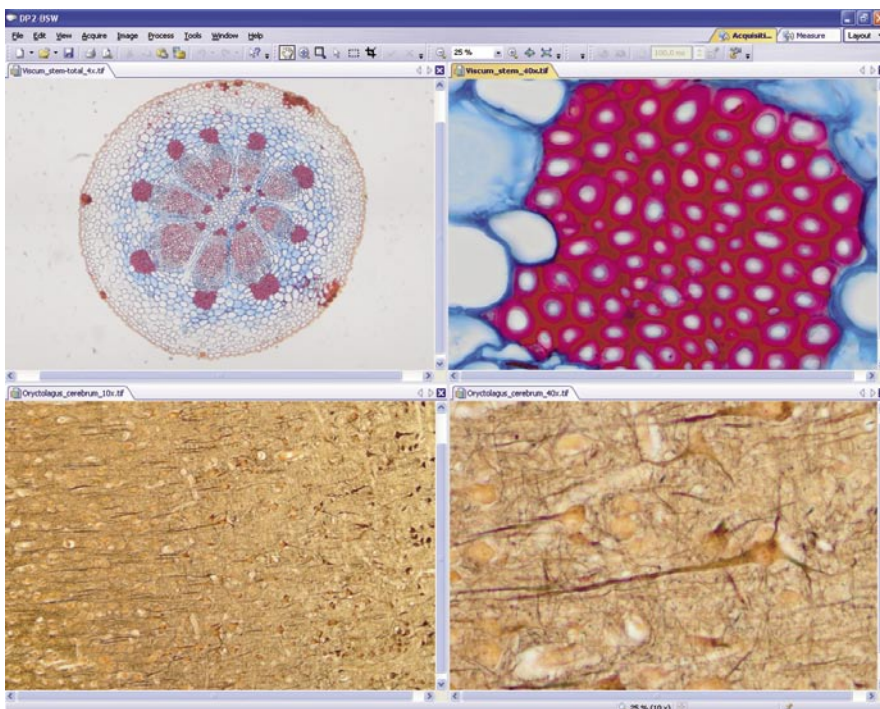


A HIGH PERFORMANCE 5-MEGAPIXEL COLOR CAMERA SYSTEM



The Olympus DP25 is an easy-to-operate digital color camera system for a broad range of scientific microscopy image acquisition uses, mainly focused on image documentation, reporting and analysis. Its high resolution, fast frame rates and excellent color fidelity all guarantee an efficient microscopy workflow.

DP2-BSW (OPTIONAL SOFTWARE)



Perfect images

Whether using the automatic exposure routines, or manually setting various camera parameters (e.g. brightness, contrast, gamma), you can experience optimal image quality during live viewing. All acquired images are calibrated automatically, and may be prepared as desired with post-acquisition geometry, enhancement and filtering functions.

Easy file management

Descriptive data (e.g. camera parameters, magnification) are attached to each captured image automatically. User defined sample or experiment name and comments may be added. Automatic saving in a preselected folder is supported.

Top-of-the-line technical properties

The Olympus DP25 acquires images at a maximum resolution of 2560 x 1920 pixels. To achieve higher sensitivity or to increase the frame rates, true-color binning modes from 2x to 4x are supported. The high dynamic range of the DP25 ensures images of outstanding quality.

High frame rates

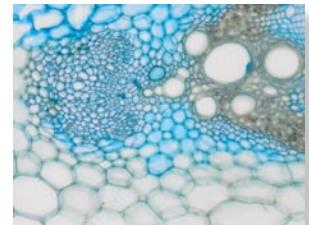
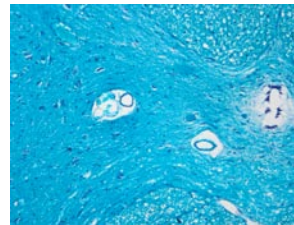
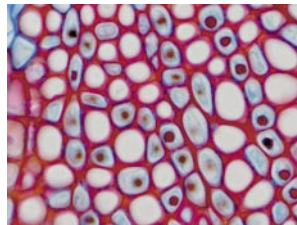
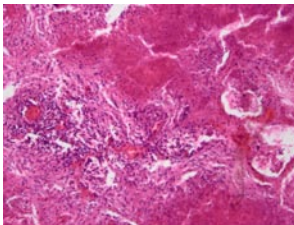
The DP25 provides several resolutions using various read-out modes. With a video-like resolution it delivers 30 frames per second, whereas its progressive mode with a resolution of 1280 x 960 pixels is ideal for searching and focusing. At its full resolution – 2560 x 1920 pixels – the DP25 still offers an impressive 8 frames per second.

Good color reproduction

One of the DP25's remarkable attributes is its real-time true color reproduction to ensure highest color fidelity. This guarantees superb image quality with natural colors as seen through the microscope eyepieces.

Easy handling

The standard C-mount makes installation easy for all microscopes. FireWire™ technology guarantees that the DP25 can be easily installed on any PC, or any laptop equipped with a FireWire™ port.



Annotations and scale bar

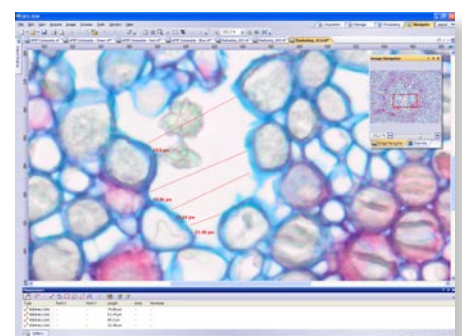
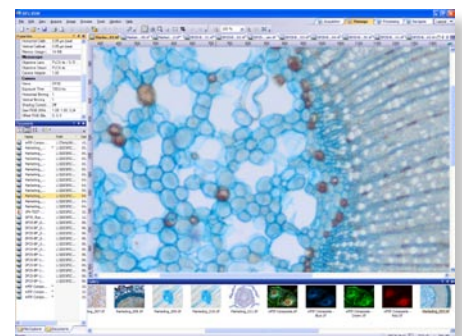
A reference scale bar can be displayed as a transparent layer over the image data, and burned onto the image if desired. A complete set of image data can also be displayed. An extensive range of text and graphic functions is available for non-destructive image labeling.

Interactive Measurements

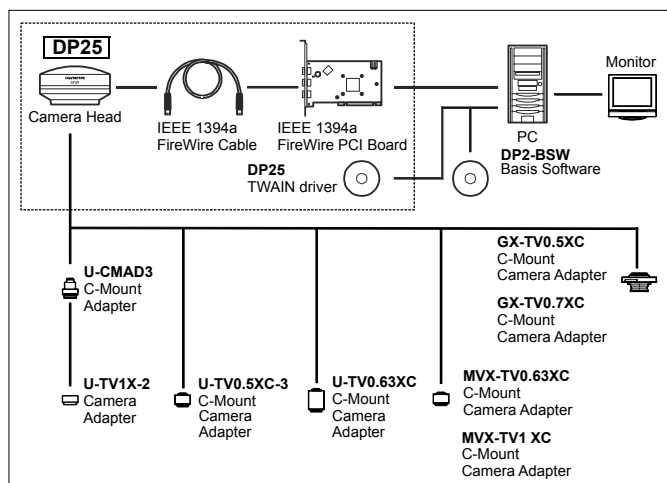
Several functions for measuring live or still images, including point measurements, arbitrary line, polygon, circle and ellipse or rectangle measurements, are integrated. For further processing the measurements can be exported to MS Excel with the simple click of a mouse.

Simple time-lapse function

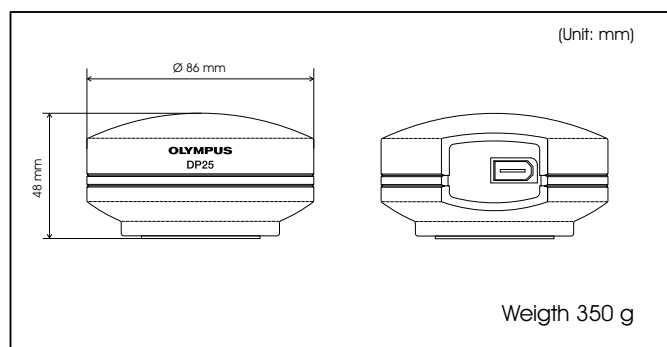
The software permits image series acquisition over a user-defined period with user-defined intervals. These series can be converted to movies (avi format), opened, played back and single frames extracted.



System chart



Dimensions



DP25 digital camera components



The DP25 digital camera system includes: camera head, PCI FireWire™ card, FireWire™ cable, and CD-ROM (TWAIN driver, a basic image acquisition software)

Specifications are subject to change without any obligation on the part of the manufacturer.

DP25 Specifications

Camera	Type	Single chip color CCD camera
Imaging Sensor	Model	Sony ICX282AQF Interline CCD image sensor
	Size	2/3 inch, 9.74 mm x 7.96 mm
	Pixel size	3.4 µm x 3.4 µm
	Color filter	RGB Bayer primary color filter
	Scanning modes	Progressive, Interlaced
Microscope camera mount		C-Mount
Effective image resolution		2560 x 1920 pixel, 1280 x 960 pixel, 854 x 640 pixel, 640 x 480 pixel
Bit depth		12-bit each for R, G, B
Exposure time		1 ms - 16 s
Frame rates		8 fps at full resolution
Binning		Off (1x1), 2x2, 3x3, 4x4
White balance	Mode	Auto, Manual
Partial read out		Supported
Sharpness filter		Supported
Interface	PC Interface	FireWire™ (IEEE 1394a)
Operating system		Microsoft Windows XP SP2
Camera System		Camera head, interface cable
Dimension & weight	Camera head	86 mm x 48 mm, approx. 350g
	Interface cable	approx. 4.5 m
Online features		Online shading correction Pseudo coloring of live image Live image adjustments (contrast, brightness ...) Image on complete screen

System Requirements for DP25

CPU	Required	Pentium 4, 2.4 GHz or higher, Pentium M, 1.4 GHz or higher
	Recommended	Pentium D930, 3.0 GHz, Dual Core, Pentium M, 2.6 GHz
Hard disk storage	Required	5 GB or more
	Recommended	20 GB
Memory	Required	512 MB or more
	Recommended	1024 MB
Operating system		Microsoft Windows XP Pro SP 2
Ports		IEEE 1394a (FireWire™), 6 pin type, required power supply capacity: 12 V, 0.2 A (PCI FireWire™ card included with DP25)
Application program		Application program that supports TWAIN

DP2-BSW Specifications

Hardware support		DP20, DP25, TWAIN input for camera with TWAIN driver Dual & multiple screen support
Image acquisition		Live, snapshot, simple time lapse recording Auto calibration of magnification User defined image naming automatic saving descriptive data to each image
Image handling	Image formats	Tiff, bmp, jpeg, jpeg2000, Photoshop, avi Extract and separate multi-dimensional image data Annotations (drawing elements, scale bar, info stamp) Memory management for large image handling Synchronize multiple images
Image processing		Online shading correction Interactive measurements (Point, arbitrary line, polyline...) Image geometry (resize, rotate, mirror,...) Image enhancement (colors, brightness, contrast, gamma) Post acquisition shading correction (flat field and background) Image filtering (smoothing & sharpening filters)

OLYMPUS®

www.olympus.com

OLYMPUS CORPORATION
Shinjuku Monolith, 3-1, Nishi Shinjuku 2-chome, Shinjuku-ku, Tokyo, Japan
OLYMPUS LIFE AND MATERIAL SCIENCE EUROPA GMBH
Postfach 10 49 08, 20034 Hamburg, Germany
OLYMPUS AMERICA INC.
Two Corporate Center Drive, Melville, NY 11747-3157, U.S.A.
OLYMPUS SINGAPORE PTE LTD.
491B River Valley Road, #12-01/04 Valley Point Office Tower, Singapore 248373
OLYMPUS (BEIJING) SALES & SERVICE CO., LTD.
12-13F, NCI Tower, A12 Jianguomenwai Avenue, Chaoyang District, Beijing, 100022, China

OLYMPUS AUSTRALIA PTY. LTD.
31 Gilby Road, Mt. Waverley, VIC 3149, Melbourne, Australia.
OLYMPUS LATIN AMERICA, INC.
6100 Blue Lagoon Drive, Suite 390 Miami, FL 33126-2087, U.S.A.

This catalog is printed by environmentally-friendly waterless printing system with soy ink.