

# AU-500-WIFI2 • 5MP COLOR WIFI CAMERA

## SKYE2 WiFi™ MICROSCOPY CAMERA



Simultaneously view live images on multiple devices!

The new SKYE Microscopy Camera Series delivers fantastic color images and video without the need for cumbersome cables or bulky computers by the microscope.

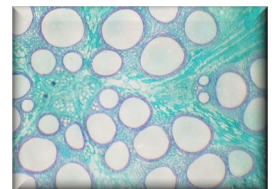
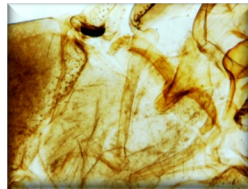
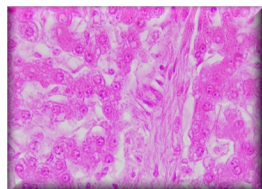
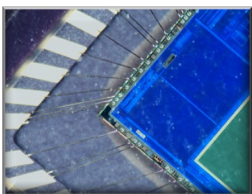
SKYE microscopy cameras set a new standard for convenience and collaboration in color microscopy imaging.

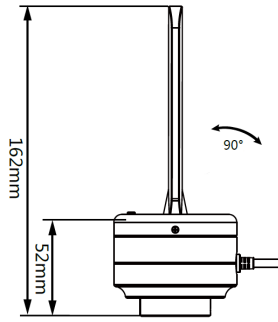
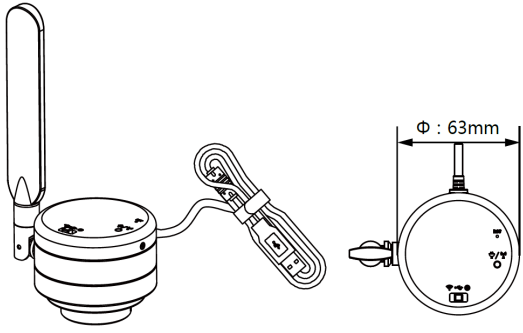
- Creates its own 2.4GHz and 5GHz WiFi network to wirelessly transfer images to a PC or mobile device connected to the network. SKYE WiFi 2 is switchable between 2.4GHz/5GHz/USB 2.0 connection mode.
- View the live image at an amazing 30 frames per second (at 2592x1944 resolution).
- Simultaneously view live images on up to 10 computers, tablets, or cell phones.
- Easily upgrade to any microscope. Attach the AU-500-WIFI2 to any camera port or eyepiece tube with a c-mount adapter.



*SKYE WiFi images and video can be viewed on PC computers and laptops, as well as Android & iOS mobile devices!*

- Full 1080P HD recording.
- Capture snapshots or videos with the click of a button.
- Great for everyday specimen observation, instruction and collaboration.

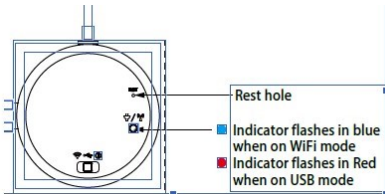




Uses a standard C-mount  
(0.35x recommended)



- 5MP CMOS Camera
- 2.4G/5G WiFi or USB 2.0 (switchable)
- 30 FPS with up to 13 simultaneous connections
- High sensitivity antenna for long transmission
- WiFi compatibility with Windows, iOS and Android (Windows ONLY for USB connection)
- SKYE View 2 imaging software



## CAMERA SPECIFICATIONS

Model	AU-500-WIFI
Sensor	OnSemi AR0521 color CMOS
Sensor Size	1/2.5" (5.70mm (H) x 4.28mm (V), Diagonal 7.13mm); 0.35x C-mount recommended
Maximum Resolution	2592x1944 (5,038,848 pixels)
Maximum Transmission WiFi or USB Frame Rate	30FPS@ 2592x1944 1920x1080 1024x768 640x480
Image / Video Capture	<b>Picture Format:</b> JPG, BMP, PNG, TIFF, PDF <b>Picture Resolution:</b> 2592x1944, 1920x1080, 1024x768, 640x480 <b>Video Format:</b> MJPG format, AVI file <b>Video Resolution:</b> 1920x1080, 1024x768, 640x480
Exposure Mode	Rolling shutter
Exposure Capability	Real-time auto, Single auto, Manual Adjustment
White Balance	Real-time auto, Single auto, Manual Adjustment
Pixel Size	2.2µm x 2.2µm
Dynamic Range	70.1dB
ADC	12-bit, 8-bit RGB to PC
SNR (Signal Noise Ratio)	38.1dB
Spectral Characteristics	380-650nm (during daytime mode)
Binning Modes	1x1, 2x2
Software Interface	DirectShow
Image Transfer (WiFi)	802.11ac (Standard)
Image Transfer (USB)	Micro USB Interface, USB2.0 DC5.0V 500mA

Wireless Standards	2.4G/5G: IEEE 802.11ac
Operating Frequency Range	2.4G: 2.400-2.4835Ghz 5G: 5.180-5.825Ghz
Power	WiFi: DC 5V 2A power cord USB: Direct-current 5V, power by USB Cable
PC Software Compatibility	Windows 7, 8, 8.1, 10 (32 & 64 bit) (PC only, Mac OS not supported) System Requirements: i7 Quad Core or higher; 48GB memory or more; 50GB hard disk free space; standalone graphics card (NVIDIA GPU)  WiFi: Internal wireless network card IEEE 802.11ac USB: USB 2.0 or higher (Software Installation) or internet connection (download from website)
iOS Compatibility	iOS 11.0 or higher Support 5G WiFi (11ac) protocol
Android Compatibility	Android 5.0 or higher Dual-core processor 1.7GHz or higher RAM memory: 3G or more Storage ROM: 8G or more Support 5G WiFi (11ac) protocol

*Design, features and specifications are subject to change without notice.*



**ISO 9001**  
Design and production adheres to ISO 9001 international quality standard.

**ISO 14001**  
Design and production meets the requirements of international standard ISO 14001 for environmental management.