

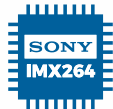
Excelis MPX

HIGH RESOLUTION MICROSCOPY CAMERA

High performance microscopy camera with outstanding color, high-speed USB 3.0 connectivity and advanced **CaptaVision+** imaging software for a wide range of applications.



Key Features



GLOBAL



COLOR



2/3"



USB 3



MAC & PC
COMPATIBLE

Recommended Applications

BRIGHTFIELD

- Pathology
- Cell biology
- Live cell imaging
- Microbiology

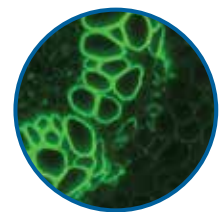
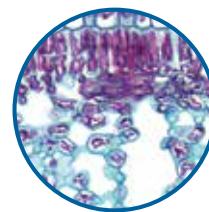
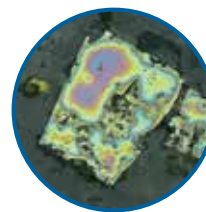
FLUORESCENCE

- Protein Expression
- Immunostaining

INDUSTRIAL

- Inspection
- Measurement & Analysis
- Documentation

DARKFIELD & POLARIZED LIGHT



Empowering Discovery. Advancing Results.

Excelis MPX-5C Pro

HIGH RESOLUTION MICROSCOPY CAMERA

Key *CaptaVision+* Software Features

- Intuitive & customizable user interface
- Simple calibration and measurements
- Advanced control of exposure, gain, color balance, etc.
- Powerful image processing tools
- Intelligent flat field correction
- Real-time fluorescence image synthesis
- Real-time stitching and depth-of-field fusion
- Flexible report generation and data export



CAMERA & SOFTWARE SPECIFICATIONS

Model	AU-5C-CMOS
Sensor/Model	CMOS • Sony IMX264LQR-C
Sensor Size	2/3"; 0.65x C-mount (recommended)
Image Transmission	High-speed
Pixel Size	3.45µm x 3.45µm
Resolution	2448 (H) X 2048 (V)
Frame Rate	35fps (2448 X 2048)
Shutter Mode	Global
Exposure Time	0.13ms–15s
Automatic Settings	Exposure, Color Scale, White Balance
Manual Settings	Exposure, Gain, Noise Reduction, Gamma, Flat Field Correction
Color Temperature	2000-15000K
ADC Depth	12Bit
Operating Temperature & Humidity	0-60°C
Camera Size & Weight	68x68x46mm / 330g
Data Interface	USB 3.0, compatible with USB 2.0
PC and Mac Imaging Software (See additional features at right)	<p>CaptaVision+ Imaging Software for PC and Mac OS</p> <p>Advanced Camera Controls: live/still image measurement and annotation; flat field correction; extended depth of focus (focus stacking); image stitching; fluorescence image settings; fluorescence multi-color channel merge; HDR (High Dynamic Range) function</p> <p>Image Types: JPEG, PNG, TIFF and DICOM (DICOM not available for Mac) TWAIN driver available</p>
System Software Compatibility	Windows 7, 8, & 10 (64-bit recommended); Mac OSX 10.4 and higher System Requirements: Intel i5 or better (Quad Core or better); 16GB RAM or more; USB 2.0 high-speed port minimum (USB 3.0 recommended)



Copyright © 2022 ACCU-SCOPE Inc. All rights reserved. Printed in the U.S.A. ACCU-SCOPE Inc. reserves the right to change and improve specifications without notice due to technological or manufacturing advances.



v041222