

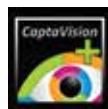
Excelis MPX

HIGH RESOLUTION MICROSCOPY CAMERA

Cooled, high-performance, high-resolution microscopy camera captures images with low noise and outstanding color. High-speed USB 3.0 connectivity and advanced **CaptaVision+** imaging software are ideal for a wide range of applications.



Key Features



Recommended Applications

BRIGHTFIELD

- Pathology
- Cell biology
- Live cell imaging
- Microbiology

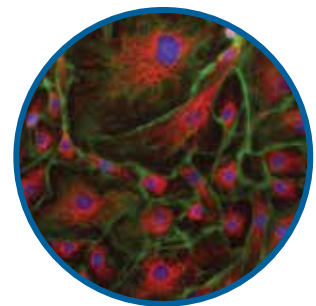
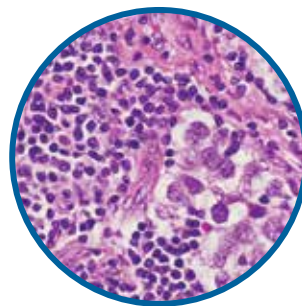
FLUORESCENCE

- Protein Expression
- Immunostaining

INDUSTRIAL

- Inspection
- Measurement & Analysis
- Documentation

DARKFIELD & POLARIZED LIGHT



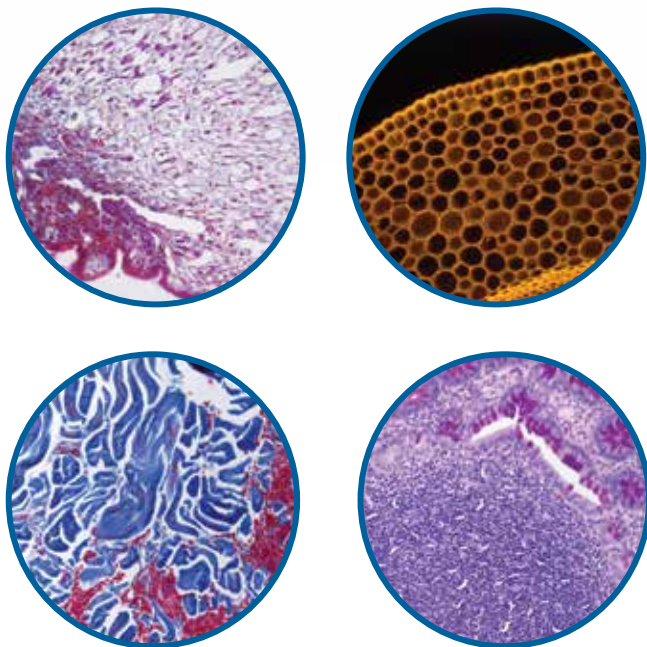
Empowering Discovery. Advancing Results.

Excelis MPX-20RC

20MP COOLED MICROSCOPY CAMERA

Key *CaptaVision+* Software Features

- Intuitive & customizable user interface
- Simple calibration and measurements
- Advanced control of exposure, gain, color balance, etc.
- Powerful image processing tools
- Intelligent flat field correction
- Real-time fluorescence image synthesis
- Real-time stitching and depth-of-field fusion
- Flexible report generation and data export



CAMERA & SOFTWARE SPECIFICATIONS

Model	AU-20RC-CMOS
Sensor/Model	CMOS • Sony IMX183, color
Quantum Efficiency	84% @ 535nm
Sensor Size	1"; 1.0x C-mount (recommended)
Pixel Size	2.4µm x 2.4µm
Resolution	5472 (H) X 3648 (V)
Frame Rate	14FPS (5472x3648), 53fps (2736x1824), 67fps (1824x1216)
Shutter Mode	Rolling
Readout Noise	<1.0e-
Full Well Capacity	3000e- (HDR)
Bit Depth	16bit/8bit
Cooling	Forced air (Ambient at +25°C): -15°C
Binning	2x2, 3x3, 4x4
Exposure Mode/Time	Manual or Auto / 18µs – 1hour
Operating Temperature/Humidity	0-40°C / 10%-85%
Camera Size & Weight	85x85x100mm/980g
Data Interface	USB 3.0
PC and Mac Imaging Software (See additional features at right)	<p>CaptaVision+ Imaging Software (for PC/Windows and Mac OS) Live/still image measurement and annotation; flat field correction; camera cooling; extended depth of focus (focus stacking); image stitching; fluorescence image settings; fluorescence multi-color channel merge; HDR (High Dynamic Range) function Image Types: JPEG, PNG, TIFF and DICOM (DICOM not supported for Mac OS)</p>
System Software Compatibility	Windows 7, 8, & 10 (64-bit recommended); Mac OS 10.14 or higher System Requirements: Intel processor (Core i5 or higher); 16GB RAM or more; USB 3.0 Hi-speed port



Copyright © 2022 ACCU-SCOPE Inc. All rights reserved. Printed in the U.S.A. ACCU-SCOPE Inc. reserves the right to change and improve specifications without notice due to technological or manufacturing advances.



v041222