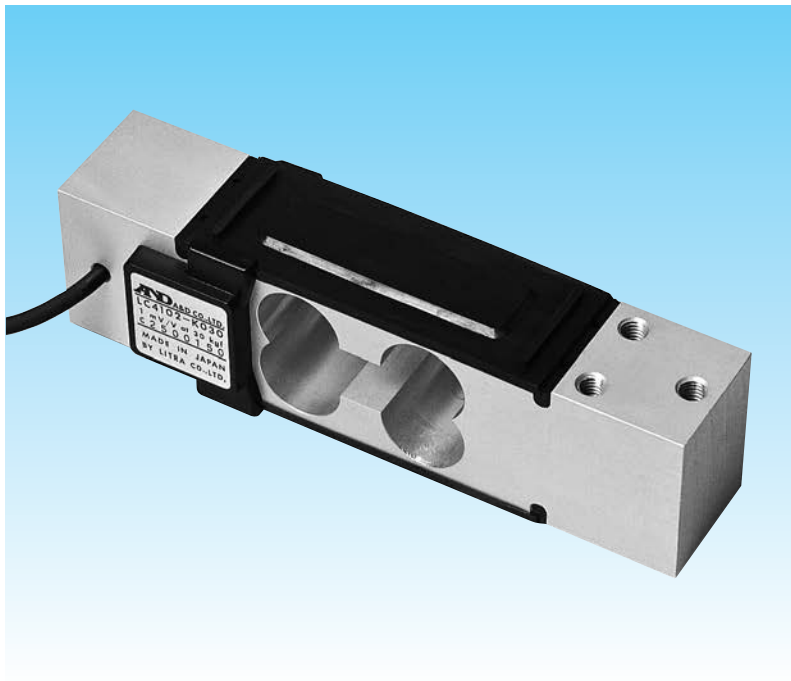


LC-4102 Series

Single-point Aluminum Load Cell Ideal for Small/Medium Capacity Weighing



Model No.	Capacity
LC-4102-K010	10.20kg (100N)
LC-4102-K015	15.30kg (150N)
LC-4102-K030	30.59kg (300N)
LC-4102-K060	61.18kg (600N)
LC-4102-K150	153.0kg (1.5kN)

Specifications

- Rated output ————— 1.0197mV/V+15% -0%
- Safe load limit ————— 300% of R.C.
- Combined error ————— 0.015% of R.O.
- Recommended excitation voltage — DC5 to 12V
- Maximum excitation voltage — DC15V
- Zero balance ————— 20±5% of R.O.
- Input terminal resistance — Approximately 400Ω
- Output terminal resistance — 350±5Ω
- Insulation resistance — 500MΩ/DC50V
- Compensated temperature range — -10°C to 40°C
- Temperature effect on
 - Zero balance ————— 0.04% of R.O./10°C
 - Span ————— 0.014% of Load/10°C Typ.
- Cable diameter/length — ø4/1.5m
- Maximum platform size — 400×400mm
- Dustproof/waterproof — IP54

